

# Galectin 8 (14S17) Rabbit Monoclonal Antibody

Galectin 8 (14S17) Rabbit Monoclonal Antibody

Catalog # AP93700

## Product Information

Application	WB, IHC-P, ICC, FC, IP, IF
Primary Accession	<a href="#">O00214</a>
Reactivity	Human
Clonality	Monoclonal
Calculated MW	35808

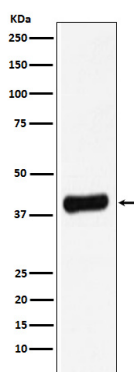
## Additional Information

Gene ID	3964
Other Names	Galectin-8 {ECO:0000303   Ref.2}, Gal-8, Po66 carbohydrate-binding protein, Po66-CBP, Prostate carcinoma tumor antigen 1, PCTA-1, LGALS8 ( <a href="#">HGNC:6569</a> )
Dilution	WB~~1:1000 IHC-P~~N/A ICC~~N/A FC~~1:10~50 IP~~N/A IF~~1:50~200
Storage Conditions	-20°C

## Protein Information

Name	LGALS8 ( <a href="#">HGNC:6569</a> )
Function	<p>Beta-galactoside-binding lectin that acts as a sensor of membrane damage caused by infection and restricts the proliferation of infecting pathogens by targeting them for autophagy (PubMed:<a href="#">22246324</a>, PubMed:<a href="#">28077878</a>). Detects membrane rupture by binding beta-galactoside ligands located on the luminal side of the endosome membrane; these ligands becoming exposed to the cytoplasm following rupture (PubMed:<a href="#">22246324</a>, PubMed:<a href="#">28077878</a>). Restricts infection by initiating autophagy via interaction with CALCOCO2/NDP52 (PubMed:<a href="#">22246324</a>, PubMed:<a href="#">28077878</a>). Required to restrict infection of bacterial invasion such as <i>S.typhimurium</i> (PubMed:<a href="#">22246324</a>). Also required to restrict infection of Picornaviridae viruses (PubMed:<a href="#">28077878</a>). Has a marked preference for 3'-O-sialylated and 3'-O-sulfated glycans (PubMed:<a href="#">21288902</a>).</p>
Cellular Location	Cytoplasmic vesicle. Cytoplasm, cytosol
Tissue Location	Ubiquitous. Selective expression by prostate carcinomas versus normal prostate and benign prostatic hypertrophy

## Images



Western blot analysis of Galectin 8 expression in LNCaP cell lysate.

Please note: All products are 'FOR RESEARCH USE ONLY. NOT FOR USE IN DIAGNOSTIC OR THERAPEUTIC PROCEDURES'.