

Integrin alpha 9 (10J18) Rabbit Monoclonal Antibody

Integrin alpha 9 (10J18) Rabbit Monoclonal Antibody

Catalog # AP93703

Product Information

Application	WB, IHC
Primary Accession	Q13797
Reactivity	Rat, Human, Mouse
Clonality	Monoclonal
Calculated MW	114489

Additional Information

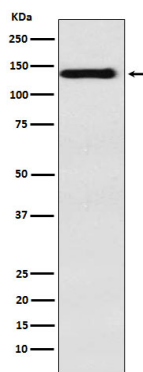
Gene ID	3680
Other Names	Integrin alpha-9, Integrin alpha-RLC, ITGA9
Dilution	WB~~1:1000 IHC~~1:100~500
Storage Conditions	-20°C

Protein Information

Name	ITGA9
Function	Integrin alpha-9/beta-1 (ITGA9:ITGB1) is a receptor for VCAM1, cytotactin and osteopontin. It recognizes the sequence A-E-I-D- G-I-E-L in cytotactin. ITGA9:ITGB1 may play a crucial role in SVEP1/polydom-mediated myoblast cell adhesion (By similarity). Integrin ITGA9:ITGB1 represses PRKCA-mediated L-type voltage-gated channel Ca(2+) influx and ROCK-mediated calcium sensitivity in vascular smooth muscle cells via its interaction with SVEP1, thereby inhibiting vasocontraction (PubMed: 35802072).
Cellular Location	Membrane; Single-pass type I membrane protein
Tissue Location	Expressed in vascular smooth muscle cells (at protein level) (PubMed:35802072). Expressed in the airway epithelium (at protein level) (PubMed:8245132).

Images

Western blot analysis of Integrin alpha 9 expression in HepG2 cell lysate.



Please note: All products are 'FOR RESEARCH USE ONLY. NOT FOR USE IN DIAGNOSTIC OR THERAPEUTIC PROCEDURES'.