

SLC27A4 / FATP4 (15B5) Rabbit Monoclonal Antibody

SLC27A4 / FATP4 (15B5) Rabbit Monoclonal Antibody

Catalog # AP93706

Product Information

Application	WB, IF, FC, ICC
Primary Accession	Q6P1M0
Reactivity	Rat, Human, Mouse
Clonality	Monoclonal
Calculated MW	72064

Additional Information

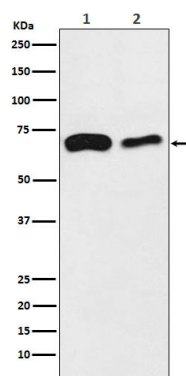
Gene ID	10999
Other Names	Long-chain fatty acid transport protein 4, FATP-4, Fatty acid transport protein 4, Arachidonate--CoA ligase, SLC27A4 (HGNC:10998)
Dilution	WB~~1:1000 IF~~1:50~200 FC~~1:10~50 ICC~~N/A
Storage Conditions	-20°C

Protein Information

Name	SLC27A4 (HGNC:10998)
Function	Mediates the levels of long-chain fatty acids (LCFA) in the cell by facilitating their transport across cell membranes (PubMed: 10518211 , PubMed: 12556534 , PubMed: 20448275 , PubMed: 21395585 , PubMed: 22022213). Appears to be the principal fatty acid transporter in small intestinal enterocytes (PubMed: 20448275). Also functions as an acyl-CoA ligase catalyzing the ATP-dependent formation of fatty acyl- CoA using LCFA and very-long-chain fatty acids (VLCFA) as substrates, which prevents fatty acid efflux from cells and might drive more fatty acid uptake (PubMed: 22022213 , PubMed: 24269233). Plays a role in the formation of the epidermal barrier. Required for fat absorption in early embryogenesis (By similarity). Probably involved in fatty acid transport across the blood barrier (PubMed: 21395585). Indirectly inhibits RPE65 via substrate competition and via production of VLCFA derivatives like lignoceroyl-CoA. Prevents light-induced degeneration of rods and cones (By similarity).
Cellular Location	Endoplasmic reticulum membrane; Multi-pass membrane protein
Tissue Location	Expressed at highest levels in brain, testis, colon and kidney. Expressed at medium levels in heart and liver, small intestine and stomach. Expressed at low levels in peripheral leukocytes, bone marrow, skeletal muscle and aorta. Expressed in adipose tissue (PubMed: 24269233 , PubMed: 9878842). Expressed

in brain gray matter (PubMed:21395585).

Images



Western blot analysis of SLC27A4 / FATP4 expression in (1) HeLa cell lysate; (2) Mouse kidney lysate.

Please note: All products are 'FOR RESEARCH USE ONLY. NOT FOR USE IN DIAGNOSTIC OR THERAPEUTIC PROCEDURES'.