

# ANP32B (9C17) Rabbit Monoclonal Antibody

ANP32B (9C17) Rabbit Monoclonal Antibody  
Catalog # AP93752

## Product Information

---

<b>Application</b>	WB, IHC-P, ICC, FC, IF
<b>Primary Accession</b>	<a href="#">Q92688</a> , <a href="#">Q9EST5</a> , <a href="#">Q9EST6</a>
<b>Reactivity</b>	Human, Mouse, Rat
<b>Clonality</b>	Monoclonal
<b>Calculated MW</b>	28788

## Additional Information

---

<b>Gene ID</b>	10541
<b>Dilution</b>	WB~~1:1000 IHC-P~~N/A ICC~~N/A FC~~1:10~50 IF~~1:50~200
<b>Storage Conditions</b>	-20°C

## Protein Information

---

<b>Name</b>	ANP32B
<b>Synonyms</b>	APRIL, PHAPI2
<b>Function</b>	Multifunctional protein that is involved in the regulation of many processes including cell proliferation, apoptosis, cell cycle progression or transcription (PubMed: <a href="#">18039846</a> , PubMed: <a href="#">20015864</a> ). Regulates the proliferation of neuronal stem cells, differentiation of leukemic cells and progression from G1 to S phase of the cell cycle. As negative regulator of caspase-3-dependent apoptosis, may act as an antagonist of ANP32A in regulating tissue homeostasis (PubMed: <a href="#">20015864</a> ). Exhibits histone chaperone properties, able to recruit histones to certain promoters, thus regulating the transcription of specific genes (PubMed: <a href="#">18039846</a> , PubMed: <a href="#">20538007</a> ). Also plays an essential role in the nucleocytoplasmic transport of specific mRNAs via the uncommon nuclear mRNA export receptor XPO1/CRM1 (PubMed: <a href="#">17178712</a> ). Participates in the regulation of adequate adaptive immune responses by acting on mRNA expression and cell proliferation (By similarity).
<b>Cellular Location</b>	[Isoform 1]: Nucleus. Cytoplasm Note=Accumulates in the nuclei at the S phase.
<b>Tissue Location</b>	Expressed in heart, lung, pancreas, prostate and in spleen, thymus and placenta.

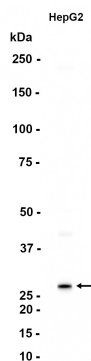
## Background

---

Enables RNA polymerase binding activity and histone binding activity. Involved in several processes, including activation of cysteine-type endopeptidase activity involved in apoptotic process; nucleosome assembly; and positive regulation of protein export from nucleus. Located in cytoplasm and nucleoplasm. Colocalizes with nucleolus. [provided by Alliance of Genome Resources, Apr 2022]

## Images

---



Western blot analysis of extracts from Jurkat cells using AP93752 at 1:1000.

Please note: All products are 'FOR RESEARCH USE ONLY. NOT FOR USE IN DIAGNOSTIC OR THERAPEUTIC PROCEDURES'.