

# MCM2 Antibody (C-term)

Affinity Purified Rabbit Polyclonal Antibody (Pab)

Catalog # AP9377B

## Product Information

---

<b>Application</b>	WB, IHC-P, E
<b>Primary Accession</b>	<a href="#">P49736</a>
<b>Other Accession</b>	<a href="#">P55861</a> , <a href="#">P97310</a>
<b>Reactivity</b>	Human, Mouse
<b>Predicted</b>	Mouse, Xenopus
<b>Host</b>	Rabbit
<b>Clonality</b>	Polyclonal
<b>Isotype</b>	Rabbit IgG
<b>Clone Names</b>	RB25168
<b>Calculated MW</b>	101896
<b>Antigen Region</b>	649-677

## Additional Information

---

<b>Gene ID</b>	4171
<b>Other Names</b>	DNA replication licensing factor MCM2, Minichromosome maintenance protein 2 homolog, Nuclear protein BM28, MCM2, BM28, CCNL1, CDCL1, KIAA0030
<b>Target/Specificity</b>	This MCM2 antibody is generated from rabbits immunized with a KLH conjugated synthetic peptide between 649-677 amino acids from the C-terminal region of human MCM2.
<b>Dilution</b>	WB~~1:1000 IHC-P~~1:100~500 E~~Use at an assay dependent concentration.
<b>Format</b>	Purified polyclonal antibody supplied in PBS with 0.09% (W/V) sodium azide. This antibody is purified through a protein A column, followed by peptide affinity purification.
<b>Storage</b>	Maintain refrigerated at 2-8°C for up to 2 weeks. For long term storage store at -20°C in small aliquots to prevent freeze-thaw cycles.
<b>Precautions</b>	MCM2 Antibody (C-term) is for research use only and not for use in diagnostic or therapeutic procedures.

## Protein Information

---

<b>Name</b>	MCM2 ( <a href="#">HGNC:6944</a> )
<b>Function</b>	Acts as a component of the MCM2-7 complex (MCM complex) which is the

replicative helicase essential for 'once per cell cycle' DNA replication initiation and elongation in eukaryotic cells. Core component of CDC45-MCM-GINS (CMG) helicase, the molecular machine that unwinds template DNA during replication, and around which the replisome is built (PubMed:[32453425](#), PubMed:[34694004](#), PubMed:[34700328](#), PubMed:[35585232](#)). The active ATPase sites in the MCM2-7 ring are formed through the interaction surfaces of two neighboring subunits such that a critical structure of a conserved arginine finger motif is provided in trans relative to the ATP-binding site of the Walker A box of the adjacent subunit. The six ATPase active sites, however, are likely to contribute differentially to the complex helicase activity (PubMed:[32453425](#)). Required for the entry in S phase and for cell division (PubMed:[8175912](#)). Plays a role in terminally differentiated hair cells development of the cochlea and induces cells apoptosis (PubMed:[26196677](#)).

#### Cellular Location

Nucleus. Chromosome. Note=Associated with chromatin before the formation of nuclei and detaches from it as DNA replication progresses.  
{ECO:0000250|UniProtKB:P55861}

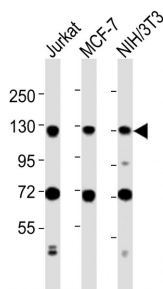
## Background

MCM2 is one of the highly conserved mini-chromosome maintenance proteins (MCM) that are involved in the initiation of eukaryotic genome replication. The hexameric protein complex formed by MCM proteins is a key component of the pre-replication complex (pre\_RC) and may be involved in the formation of replication forks and in the recruitment of other DNA replication related proteins. This protein forms a complex with MCM4, 6, and 7, and has been shown to regulate the helicase activity of the complex. This protein is phosphorylated, and thus regulated by, protein kinases CDC2 and CDC7.

## References

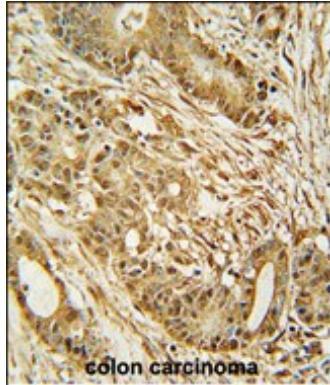
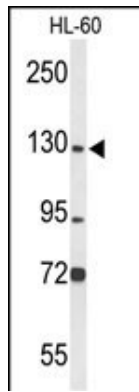
Saade, E., et al. Proteomics 9(21):4934-4943(2009)  
 Xu, X., et al. EMBO J. 28(19):3005-3014(2009)  
 Liaw, K., et al. J. Cutan. Pathol. 36(10):1121-1122(2009)  
 Im, J.S., et al. Proc. Natl. Acad. Sci. U.S.A. 106(37):15628-15632(2009)  
 Chuang, L.C., et al. Mol. Cell 35(2):206-216(2009)  
 Sugiyama, N., et al. Mol. Cell Proteomics 6(6):1103-1109(2007)  
 Matsuoka, S., et al. Science 316(5828):1160-1166(2007)  
 Olsen, J.V., et al. Cell 127(3):635-648(2006)

## Images



All lanes : Anti-MCM2 Antibody (C-term) at 1:2000 dilution  
 Lane 1: Jurkat whole cell lysates Lane 2: MCF-7 whole cell lysates Lane 3: NIH/3T3 whole cell lysates  
 Lysates/proteins at 20 µg per lane. Secondary Goat Anti-Rabbit IgG, (H+L), Peroxidase conjugated at 1/10000 dilution Predicted band size : 102 kDa Blocking/Dilution buffer: 5% NFDM/TBST.

Western blot analysis of MCM2 Antibody (C-term) (Cat. #AP9377b) in HL-60 cell line lysates (35ug/lane). MCM2 (arrow) was detected using the purified Pab.



MCM2 Antibody (C-term) (Cat. #AP9377b)  
immunohistochemistry analysis in formalin fixed and  
paraffin embedded human colon carcinoma followed by  
peroxidase conjugation of the secondary antibody and  
DAB staining. This data demonstrates the use of the  
MCM2 Antibody (C-term) for immunohistochemistry.  
Clinical relevance has not been evaluated.

Please note: All products are 'FOR RESEARCH USE ONLY. NOT FOR USE IN DIAGNOSTIC OR THERAPEUTIC PROCEDURES'.