

# ALK-1 (9M14) Rabbit Monoclonal Antibody

ALK-1 (9M14) Rabbit Monoclonal Antibody  
Catalog # AP93806

## Product Information

---

<b>Application</b>	WB
<b>Primary Accession</b>	<a href="#">P80203</a>
<b>Reactivity</b>	Mouse, Rat
<b>Clonality</b>	Monoclonal
<b>Calculated MW</b>	56703

## Additional Information

---

<b>Gene ID</b>	25237
<b>Other Names</b>	Activin receptor type-1-like, 2.7.11.30, Serine/threonine-protein kinase receptor R3, SKR3, TGF-B superfamily receptor type I, TSR-I, Acvrl1, Acvrlk1
<b>Dilution</b>	WB~~1:1000
<b>Storage Conditions</b>	-20°C

## Protein Information

---

<b>Name</b>	Acvrl1
<b>Synonyms</b>	Acvrlk1
<b>Function</b>	Type I receptor for TGF-beta family ligands BMP9/GDF2 and BMP10 and important regulator of normal blood vessel development. On ligand binding, forms a receptor complex consisting of two type II and two type I transmembrane serine/threonine kinases. Type II receptors phosphorylate and activate type I receptors which autophosphorylate, then bind and activate SMAD transcriptional regulators. May bind activin as well.
<b>Cellular Location</b>	Cell membrane {ECO:0000250   UniProtKB:P37023}; Single-pass type I membrane protein
<b>Tissue Location</b>	Urogenital ridge, testis, ovary, brain and lung. In lung, found exclusively in pulmonary vessels of all sizes. Also expressed in aorta, vena cava and certain blood vessels of kidney, spleen, heart and intestine. For most blood vessels, a higher level of expression is found in endothelium than in adjacent smooth muscle

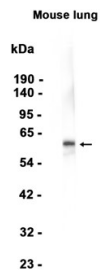
## Background

---

Type I receptor for TGF-beta family ligands BMP9/GDF2 and BMP10 and important regulator of normal blood vessel development

## Images

---



Western blot analysis of extracts from Mouse lung tissue using AP93806 at 1:1000.

Please note: All products are 'FOR RESEARCH USE ONLY. NOT FOR USE IN DIAGNOSTIC OR THERAPEUTIC PROCEDURES'.