

# Acetylcholinesterase (10Q19) Rabbit Monoclonal Antibody

Acetylcholinesterase (10Q19) Rabbit Monoclonal Antibody  
Catalog # AP93817

## Product Information

---

<b>Application</b>	WB, IHC-P, IF
<b>Primary Accession</b>	<a href="#">P21836</a>
<b>Reactivity</b>	Mouse, Rat
<b>Clonality</b>	Monoclonal
<b>Calculated MW</b>	68169

## Additional Information

---

<b>Gene ID</b>	11423
<b>Other Names</b>	Acetylcholinesterase, AChE, 3.1.1.7, Ache
<b>Dilution</b>	WB~~1:1000 IHC-P~~N/A IF~~1:50~200
<b>Storage Conditions</b>	-20°C

## Protein Information

---

<b>Name</b>	Ache
<b>Function</b>	Terminates signal transduction at the neuromuscular junction by rapid hydrolysis of the acetylcholine released into the synaptic cleft.
<b>Cellular Location</b>	Synapse. Secreted. Cell membrane; Peripheral membrane protein
<b>Tissue Location</b>	Predominates in most expressing tissues except erythrocytes where a glycopospholipid-attached form of ACHE predominates

## Background

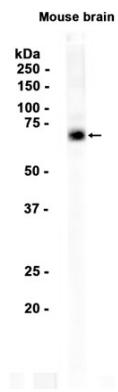
---

Terminates signal transduction at the neuromuscular junction by rapid hydrolysis of the acetylcholine released into the synaptic cleft.

## Images

---

Western blot analysis of extracts from Mouse brain tissue using AP93817 at 1:1000.



Please note: All products are 'FOR RESEARCH USE ONLY. NOT FOR USE IN DIAGNOSTIC OR THERAPEUTIC PROCEDURES'.