

PPP3R2 Antibody (N-term)

Affinity Purified Rabbit Polyclonal Antibody (Pab)

Catalog # AP9384a

Product Information

Application	WB, IHC-P, FC, E
Primary Accession	Q96LZ3
Reactivity	Human, Mouse
Host	Rabbit
Clonality	Polyclonal
Isotype	Rabbit IgG
Clone Names	RB22165
Calculated MW	19533
Antigen Region	3-29

Additional Information

Gene ID	5535
Other Names	Calcineurin subunit B type 2, Calcineurin B-like protein, CBLP, Calcineurin BII, CNBII, PPP3R1-like, Protein phosphatase 2B regulatory subunit 2, Protein phosphatase 3 regulatory subunit B beta isoform, PPP3R2, CBLP, PPP3RL
Target/Specificity	This PPP3R2 antibody is generated from rabbits immunized with a KLH conjugated synthetic peptide between 3-29 amino acids from the N-terminal region of human PPP3R2.
Dilution	WB~~1:1000 IHC-P~~1:100~500 FC~~1:10~50 E~~Use at an assay dependent concentration.
Format	Purified polyclonal antibody supplied in PBS with 0.09% (W/V) sodium azide. This antibody is purified through a protein A column, followed by peptide affinity purification.
Storage	Maintain refrigerated at 2-8°C for up to 2 weeks. For long term storage store at -20°C in small aliquots to prevent freeze-thaw cycles.
Precautions	PPP3R2 Antibody (N-term) is for research use only and not for use in diagnostic or therapeutic procedures.

Protein Information

Name	PPP3R2
Synonyms	CBLP, PPP3RL

Function	Regulatory subunit of calcineurin, a calcium-dependent, calmodulin stimulated protein phosphatase. Confers calcium sensitivity.
Cellular Location	Mitochondrion {ECO:0000250 UniProtKB:Q63811}. Note=Localizes in the mitochondria in a SPATA33-dependent manner {ECO:0000250 UniProtKB:Q63811}
Tissue Location	Testis-specific..

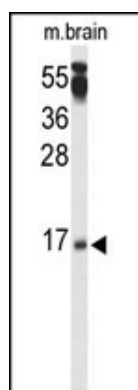
Background

PPP3R2 is regulatory subunit of calcineurin, a calcium-dependent, calmodulin stimulated protein phosphatase. This protein confers calcium sensitivity (By similarity).

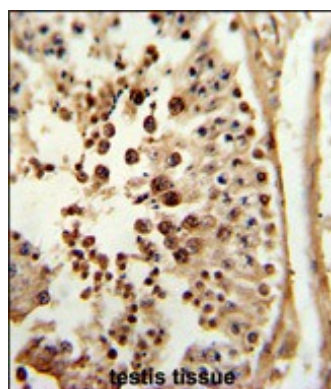
References

He, Z.H., et al. Eur. J. Appl. Physiol. (2010) In press :
 Need, A.C., et al. Eur. J. Hum. Genet. 17(7):946-957(2009)
 Chow, R., et al. Biochem. Biophys. Res. Commun. 363(3):506-512(2007)
 Saeki, M., et al. J. Biol. Chem. 282(16):11786-11794(2007)

Images

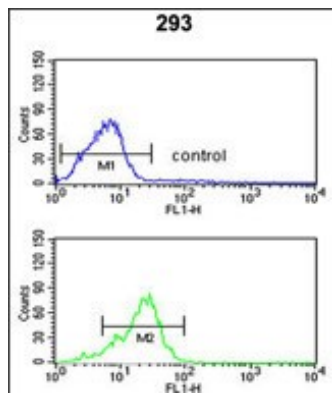


Western blot analysis of PPP3R2 Antibody (N-term) (Cat. #AP9384a) in mouse brain tissue lysates (35ug/lane). PPP3R2 (arrow) was detected using the purified Pab.



Formalin-fixed and paraffin-embedded human testis tissue reacted with PPP3R2 Antibody (N-term), which was peroxidase-conjugated to the secondary antibody, followed by DAB staining. This data demonstrates the use of this antibody for immunohistochemistry; clinical relevance has not been evaluated.

PPP3R2 Antibody (N-term) (Cat. #AP9384a) flow cytometric analysis of 293 cells (bottom histogram) compared to a negative control cell (top histogram). FITC-conjugated goat-anti-rabbit secondary antibodies were used for the analysis.



Please note: All products are 'FOR RESEARCH USE ONLY. NOT FOR USE IN DIAGNOSTIC OR THERAPEUTIC PROCEDURES'.