

# PRCC (7H14) Mouse Monoclonal antibody

PRCC (7H14) Mouse Monoclonal antibody

Catalog # AP93863

## Product Information

---

<b>Application</b>	WB
<b>Primary Accession</b>	<a href="#">Q92733</a>
<b>Reactivity</b>	Rat, Human, Mouse
<b>Clonality</b>	Monoclonal
<b>Calculated MW</b>	52418

## Additional Information

---

<b>Gene ID</b>	5546
<b>Other Names</b>	Proline-rich protein PRCC, Papillary renal cell carcinoma translocation-associated gene protein, PRCC, TPRC
<b>Dilution</b>	WB~~1:1000
<b>Storage Conditions</b>	-20°C

## Protein Information

---

<b>Name</b>	PRCC
<b>Synonyms</b>	TPRC
<b>Function</b>	May regulate cell cycle progression through interaction with MAD2L2.
<b>Cellular Location</b>	Nucleus.
<b>Tissue Location</b>	Ubiquitous in fetal and adult tissues.

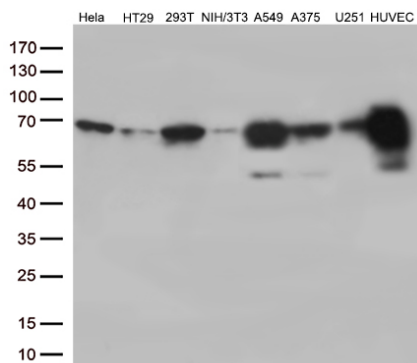
## Background

---

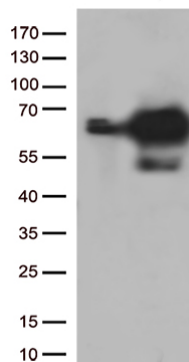
This gene encodes a protein that may play a role in pre-mRNA splicing. Chromosomal translocations (X;1)(p11;q21) that result in fusion of this gene to TFE3 (GeneID 7030) have been associated with papillary renal cell carcinoma. A PRCC-TFE3 fusion protein is expressed in affected carcinomas and is likely associated with altered gene transactivation. This fusion protein has also been associated with disruption of the cell cycle. [provided by RefSeq, Aug 2010]

## Images

---



Western blot analysis of extracts (35ug) from 8 different cell lines by using anti-PRCC monoclonal antibody (1:500).



HEK293T cells were transfected with the pCMV6-ENTRY control (Left lane) or pCMV6-ENTRY PRCC (Right lane) cDNA for 48 hrs and lysed. Equivalent amounts of cell lysates (5 ug per lane) were separated by SDS-PAGE and immunoblotted with anti-PRCC. Positive lysates (100ug) and (20ug) can be purchased separately from biodragon.

Please note: All products are 'FOR RESEARCH USE ONLY. NOT FOR USE IN DIAGNOSTIC OR THERAPEUTIC PROCEDURES'.