

# LAMC1 Rabbit pAb

LAMC1 Rabbit pAb  
Catalog # AP94107

## Product Information

---

<b>Application</b>	WB, IHC-P, IHC-F, IF
<b>Primary Accession</b>	<a href="#">P11047</a>
<b>Reactivity</b>	Mouse, Rat
<b>Predicted</b>	Human
<b>Host</b>	Rabbit
<b>Clonality</b>	Polyclonal
<b>Calculated MW</b>	177603
<b>Physical State</b>	Liquid
<b>Immunogen</b>	KLH conjugated synthetic peptide derived from human LAMC1
<b>Epitope Specificity</b>	1501-1609/1609
<b>Isotype</b>	IgG
<b>Purity</b>	affinity purified by Protein A
<b>Buffer</b>	0.01M TBS (pH7.4) with 1% BSA, 0.02% Proclin300 and 50% Glycerol.
<b>SUBCELLULAR LOCATION</b>	Secreted, extracellular space, extracellular matrix, basement membrane.
<b>SIMILARITY</b>	Contains 11 laminin EGF-like domains. Contains 1 laminin IV type A domain. Contains 1 laminin N-terminal domain.
<b>SUBUNIT</b>	Laminin is a complex glycoprotein, consisting of three different polypeptide chains (alpha, beta, gamma), which are bound to each other by disulfide bonds into a cross-shaped molecule comprising one long and three short arms with globules at each end. Gamma-1 is a subunit of laminin-1 (laminin-111 or EHS laminin), laminin-2 (laminin-211 or merosin), laminin-3 (laminin-121 or S-laminin), laminin-4 (laminin-221 or S-merosin), laminin-6 (laminin-311 or K-laminin), laminin-7 (laminin-321 or KS-laminin), laminin-8 (laminin-411), laminin-9 (laminin-421), laminin-10 (laminin-511) and laminin-11 (laminin-521).
<b>Important Note</b>	This product as supplied is intended for research use only, not for use in human, therapeutic or diagnostic applications.
<b>Background Descriptions</b>	Laminins, a family of extracellular matrix glycoproteins, are the major noncollagenous constituent of basement membranes. They have been implicated in a wide variety of biological processes including cell adhesion, differentiation, migration, signaling, neurite outgrowth and metastasis. Laminins are composed of 3 non identical chains: laminin alpha, beta and gamma (formerly A, B1, and B2, respectively) and they form a cruciform structure consisting of 3 short arms, each formed by a different chain, and a long arm composed of all 3 chains. The gamma 1 chain, formerly thought to be a beta chain, contains structural domains similar to beta chains, however, lacks the short alpha region separating domains I and II. The structural organization of this gene also suggested that it had diverged considerably from the beta chain genes.

## Additional Information

---

<b>Gene ID</b>	3915
<b>Other Names</b>	Laminin subunit gamma-1, Laminin B2 chain, Laminin-1 subunit gamma, Laminin-10 subunit gamma, Laminin-11 subunit gamma, Laminin-2 subunit gamma, Laminin-3 subunit gamma, Laminin-4 subunit gamma, Laminin-6 subunit gamma, Laminin-7 subunit gamma, Laminin-8 subunit gamma, Laminin-9 subunit gamma, S-laminin subunit gamma, S-LAM gamma, LAMC1 {ECO:0000303 PubMed:28397838, ECO:0000312 HGNC:HGNC:6492}
<b>Target/Specificity</b>	Found in the basement membranes.
<b>Dilution</b>	WB=1:500-2000,IHC-P=1:100-500,IHC-F=1:100-500,IF=1:100-500
<b>Storage</b>	Store at -20 °C for one year. Avoid repeated freeze/thaw cycles. When reconstituted in sterile pH 7.4 0.01M PBS or diluent of antibody the antibody is stable for at least two weeks at 2-4 °C.

## Protein Information

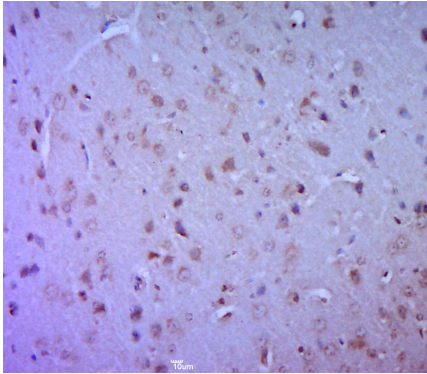
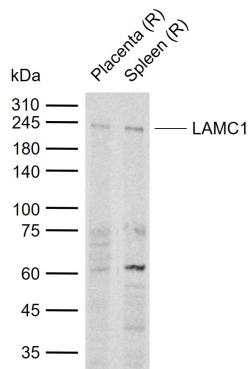
<b>Name</b>	LAMC1 {ECO:0000303 PubMed:28397838, ECO:0000312 HGNC:HGNC:6492}
<b>Function</b>	Binding to cells via a high affinity receptor, laminin is thought to mediate the attachment, migration and organization of cells into tissues during embryonic development by interacting with other extracellular matrix components. As a subunit of laminin-1 (also known as laminin-111 or EHS laminin), it is involved in the stimulation of agrin-induced receptor clustering through a MuSK-independent pathway.
<b>Cellular Location</b>	Secreted, extracellular space, extracellular matrix, basement membrane
<b>Tissue Location</b>	Found in the basement membranes (major component).

## Background

Laminins, a family of extracellular matrix glycoproteins, are the major noncollagenous constituent of basement membranes. They have been implicated in a wide variety of biological processes including cell adhesion, differentiation, migration, signaling, neurite outgrowth and metastasis. Laminins are composed of 3 non identical chains: laminin alpha, beta and gamma (formerly A, B1, and B2, respectively) and they form a cruciform structure consisting of 3 short arms, each formed by a different chain, and a long arm composed of all 3 chains. The gamma 1 chain, formerly thought to be a beta chain, contains structural domains similar to beta chains, however, lacks the short alpha region separating domains I and II. The structural organization of this gene also suggested that it had diverged considerably from the beta chain genes.

## Images

Sample:  
Lane 1: Rat Placenta tissue lysates  
Lane 2: Rat Spleen tissue lysates  
Primary: Anti-LAMC1 (AP94107) at 1/1000 dilution  
Secondary: IRDye800CW Goat Anti-Rabbit IgG at 1/20000 dilution  
Predicted band size: 174 kDa  
Observed band size: 230 kDa



Paraformaldehyde-fixed, paraffin embedded (mouse brain tissue); Antigen retrieval by boiling in sodium citrate buffer (pH6.0) for 15min; Block endogenous peroxidase by 3% hydrogen peroxide for 20 minutes; Blocking buffer (normal goat serum) at 37°C for 30min; Antibody incubation with (Laminin B2 gamma 1) Polyclonal Antibody, Unconjugated (AP94107) at 1:400 overnight at 4°C, followed by a conjugated secondary (sp-0023) for 20 minutes and DAB staining.

Please note: All products are 'FOR RESEARCH USE ONLY. NOT FOR USE IN DIAGNOSTIC OR THERAPEUTIC PROCEDURES'.