

# Laminin alpha 1 Rabbit pAb

Laminin alpha 1 Rabbit pAb  
Catalog # AP94175

## Product Information

---

<b>Application</b>	WB
<b>Primary Accession</b>	<a href="#">P07942</a>
<b>Reactivity</b>	Human
<b>Host</b>	Rabbit
<b>Clonality</b>	Polyclonal
<b>Calculated MW</b>	198038
<b>Physical State</b>	Liquid
<b>Immunogen</b>	KLH conjugated synthetic peptide derived from human Laminin alpha 1
<b>Epitope Specificity</b>	N-terminal
<b>Isotype</b>	IgG
<b>Purity</b>	affinity purified by Protein A
<b>Buffer</b>	0.01M TBS (pH7.4) with 1% BSA, 0.02% Proclin300 and 50% Glycerol.
<b>SUBCELLULAR LOCATION</b>	Secreted > extracellular space > extracellular matrix > basement membrane.
<b>SIMILARITY</b>	Contains 17 laminin EGF-like domains. Contains 5 laminin G-like domains. Contains 2 laminin IV type A domains. Contains 1 laminin N-terminal domain.
<b>SUBUNIT</b>	Laminin is a complex glycoprotein, consisting of three different polypeptide chains (alpha, beta, gamma), which are bound to each other by disulfide bonds into a cross-shaped molecule comprising one long and three short arms with globules at each end. Alpha-1 is a subunit of laminin-1 (laminin-111 or EHS laminin) and laminin-3 (laminin-121 or S-laminin).
<b>Important Note</b>	This product as supplied is intended for research use only, not for use in human, therapeutic or diagnostic applications.
<b>Background Descriptions</b>	The nuclear lamina consists of a two-dimensional matrix of proteins located next to the inner nuclear membrane. The lamin family of proteins make up the matrix and are highly conserved in evolution. During mitosis, the lamina matrix is reversibly disassembled as the lamin proteins are phosphorylated. Lamin proteins are thought to be involved in nuclear stability, chromatin structure and gene expression. Vertebrate lamins consist of two types, A and B. This gene encodes one of the two B type proteins, B1. Alternative splicing results in transcript variants and a duplication of this gene is associated with autosomal dominant adult-onset leukodystrophy (ADLD). [provided by RefSeq, Oct 2010].

## Additional Information

---

<b>Gene ID</b>	3912
<b>Other Names</b>	Laminin subunit beta-1, Laminin B1 chain, Laminin-1 subunit beta, Laminin-10 subunit beta, Laminin-12 subunit beta, Laminin-2 subunit beta, Laminin-6 subunit beta, Laminin-8 subunit beta, LAMB1

<b>Target/Specificity</b>	Broadly expressed in: skin, heart, lung, and the reproductive tracts.
<b>Dilution</b>	WB=1:500-2000
<b>Storage</b>	Store at -20 °C for one year. Avoid repeated freeze/thaw cycles. When reconstituted in sterile pH 7.4 0.01M PBS or diluent of antibody the antibody is stable for at least two weeks at 2-4 °C.

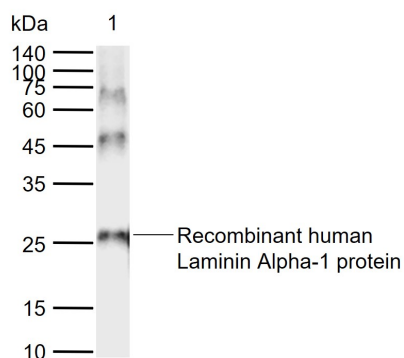
## Protein Information

<b>Name</b>	LAMB1
<b>Function</b>	Binding to cells via a high affinity receptor, laminin is thought to mediate the attachment, migration and organization of cells into tissues during embryonic development by interacting with other extracellular matrix components. Involved in the organization of the laminar architecture of the cerebral cortex (PubMed: <a href="#">23472759</a> ). It is probably required for the integrity of the basement membrane/glia limitans that serves as an anchor point for the endfeet of radial glial cells and as a physical barrier to migrating neurons (By similarity). Radial glial cells play a central role in cerebral cortical development, where they act both as the proliferative unit of the cerebral cortex and a scaffold for neurons migrating toward the pial surface (By similarity). As a subunit of laminin-1 (also known as laminin-111 or EHS laminin), it is involved in the stimulation of agrin-induced receptor clustering through a MuSK-independent pathway (By similarity).
<b>Cellular Location</b>	Secreted, extracellular space, extracellular matrix, basement membrane. Note=Major component

## Background

The nuclear lamina consists of a two-dimensional matrix of proteins located next to the inner nuclear membrane. The lamin family of proteins make up the matrix and are highly conserved in evolution. During mitosis, the lamina matrix is reversibly disassembled as the lamin proteins are phosphorylated. Lamin proteins are thought to be involved in nuclear stability, chromatin structure and gene expression. Vertebrate lamins consist of two types, A and B. This gene encodes one of the two B type proteins, B1. Alternative splicing results in transcript variants and a duplication of this gene is associated with autosomal dominant adult-onset leukodystrophy (ADLD). [provided by RefSeq, Oct 2010].

## Images



Sample:  
Lane 1: Recombinant human Laminin Alpha-1 protein  
Primary: Anti-Laminin alpha 1 (AP94175) at 1/1000 dilution  
Secondary: IRDye800CW Goat Anti-Rabbit IgG at 1/20000 dilution  
Predicted band size: 337 kDa  
Observed band size: 26 kDa