

ADAM10 Recombinant Mouse mAb

ADAM10 Recombinant Mouse mAb
Catalog # AP94245

Product Information

Application	IHC-P, IHC-F, IF
Reactivity	Human
Host	Mouse
Clonality	Recombinant
Calculated MW	84 KDa
Physical State	Liquid
Isotype	IgG1, Kappa
Purity	affinity purified by Protein G
Buffer	0.01M TBS (pH7.4) with 1% BSA, 0.02% Proclin300 and 50% Glycerol.
SUBCELLULAR LOCATION	Cytoplasm. Nucleus. Note=Cytoplasmic in the absence of ligand, nuclear after ligand-binding.Isoform Beta: Nucleus. Note=Localized largely in the nucleus.
SIMILARITY	Belongs to the nuclear hormone receptor family. NR3 subfamily.Contains 1 nuclear receptor DNA-binding domain.
SUBUNIT	Heteromultimeric cytoplasmic complex with HSP90, HSP70, and FKBP5 or another immunophilin, or the immunophilin homolog PPP5C. Directly interacts with UNC45A. Upon ligand binding FKBP5 dissociates from the complex and FKBP4 takes its place, thereby linking the complex to dynein and mediating transport to the nucleus, where the complex dissociates (By similarity). Binds to DNA as a homodimer, and as a heterodimer with NR3C2 or the retinoid X receptor. Binds STAT5A and STAT5B homodimers and heterodimers. Interacts with NRIP1, POU2F1, POU2F2 and TRIM28. Interacts with NCOA1, NCOA3, SMARCA4, SMARCC1, SMARCD1, and SMARCE1 (By similarity). Interacts with several coactivator complexes, including the SMARCA4 complex, CREBBP/EP300, TADA2L and p160 coactivators such as NCOA2 and NCOA6. Interaction with BAG1 inhibits transactivation. Interacts with HEXIM1, PELP1 and TGFB1I1.
Important Note	This product as supplied is intended for research use only, not for use in human, therapeutic or diagnostic applications.
Background Descriptions	Members of the ADAM family are cell surface proteins with a unique structure possessing both potential adhesion and protease domains. This gene encodes and ADAM family member that cleaves many proteins including TNF-alpha and E-cadherin. Alternate splicing results in multiple transcript variants encoding different proteins that may undergo similar processing. [provided by RefSeq, Feb 2016]

Additional Information

Target/Specificity	Widely expressed. In the heart, detected in left and right atria, left and right ventricles, aorta, apex, intraventricular septum, and atrioventricular node as well as whole adult and fetal heart.
---------------------------	------------------------------------------------------------------------------------------------------------------------------------------------------------------------------------------------------

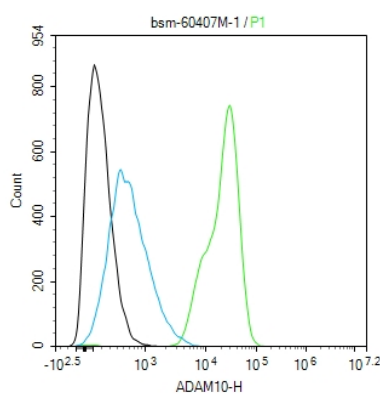
Dilution Flow-Cyt=1:50-100,IHC-P=1:50-200,IHC-F=1:50-200,IF=1:50-200,ICC/IF=1:50-200

Storage Store at -20 °C for one year. Avoid repeated freeze/thaw cycles. When reconstituted in sterile pH 7.4 0.01M PBS or diluent of antibody the antibody is stable for at least two weeks at 2-4 °C.

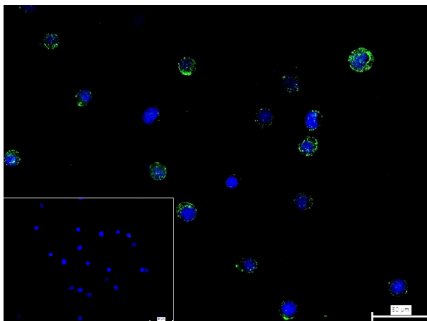
Background

Members of the ADAM family are cell surface proteins with a unique structure possessing both potential adhesion and protease domains. This gene encodes an ADAM family member that cleaves many proteins including TNF-alpha and E-cadherin. Alternate splicing results in multiple transcript variants encoding different proteins that may undergo similar processing. [provided by RefSeq, Feb 2016]

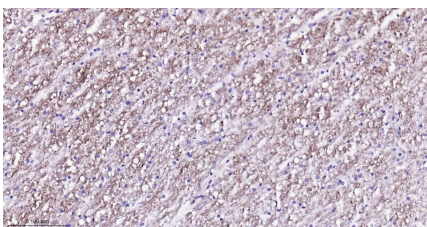
Images



The Jurkat (H) cells were incubated in 5% BSA to block non-specific protein-protein interactions (30 min at r.t.). Primary Antibody (green): Mouse Anti-ADAM10 antibody (AP94245, 1:100); Secondary Antibody (white blue): Goat anti-Mouse IgG-FITC (AP94245-FITC): 1 µg/test. Blank control (black): PBS. Acquisition of 20,000 events was performed.

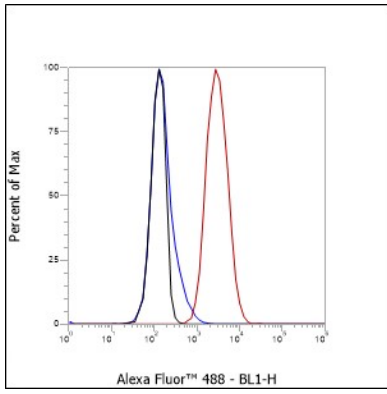


4% Paraformaldehyde-fixed Jurkat (H) cell; Antibody incubation with (ADAM10) monoclonal Antibody, unconjugated (AP94245) 1:100, 90 min at 37°C; followed by conjugated Goat Anti-Mouse IgG antibody (green, AP94245-FITC) at 37°C for 90 min, DAPI (blue, C02-04002) was used to stain the cell nuclei. PBS instead of the primary antibody was used as the blank control.



Paraformaldehyde-fixed, paraffin embedded Human Right occipital lobe; Antigen retrieval by boiling in sodium citrate buffer (pH6.0) for 15 min; The section was incubated with ADAM10 Monoclonal Antibody, Unconjugated (AP94245) at 1:200 overnight at 4°C, followed by conjugation to the AP94245-HRP and DAB (C-0010) staining.

Cell line: PBMC Fixative: Unfixed Permeabilization: None
Primary ab dilution: 1:100 Secondary ab: Goat anti Mouse IgG Unlabelled control: The cell without incubation with primary antibody and secondary antibody (Black line).
Isotype control: Mouse monoclonal IgG (Blue line).
Comment: Line red is the positive signal for AP94245



Please note: All products are 'FOR RESEARCH USE ONLY. NOT FOR USE IN DIAGNOSTIC OR THERAPEUTIC PROCEDURES'.