

# TAC2N Antibody (N-term)

Affinity Purified Rabbit Polyclonal Antibody (Pab)

Catalog # AP9427a

## Product Information

---

Application	WB, IHC-P, E
Primary Accession	<a href="#">Q8N9U0</a>
Reactivity	Human, Mouse
Host	Rabbit
Clonality	Polyclonal
Isotype	Rabbit IgG
Clone Names	RB24812
Calculated MW	55284
Antigen Region	3-30

## Additional Information

---

Gene ID	123036
Other Names	Tandem C2 domains nuclear protein, Membrane targeting tandem C2 domain-containing protein 1, Tandem C2 protein in nucleus, Tac2-N, TC2N, C14orf47, MTAC2D1
Target/Specificity	This TAC2N antibody is generated from rabbits immunized with a KLH conjugated synthetic peptide between 3-30 amino acids from the N-terminal region of human TAC2N.
Dilution	WB~~1:1000 IHC-P~~1:100~500 E~~Use at an assay dependent concentration.
Format	Purified polyclonal antibody supplied in PBS with 0.09% (W/V) sodium azide. This antibody is purified through a protein A column, followed by peptide affinity purification.
Storage	Maintain refrigerated at 2-8°C for up to 2 weeks. For long term storage store at -20°C in small aliquots to prevent freeze-thaw cycles.
Precautions	TAC2N Antibody (N-term) is for research use only and not for use in diagnostic or therapeutic procedures.

## Protein Information

---

Name	TC2N
Synonyms	C14orf47, MTAC2D1
Cellular Location	Nucleus.

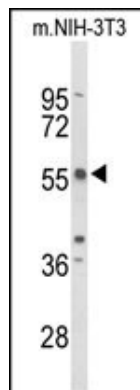
## References

---

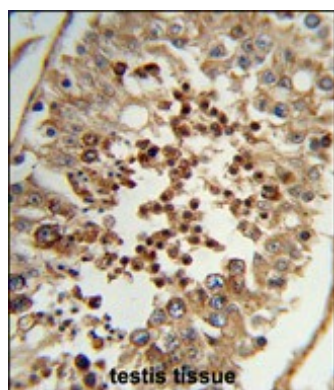
Fukuda, M., et al. FEBS Lett. 503 (2-3), 217-218 (2001)

## Images

---



Western blot analysis of TAC2N Antibody (N-term) (Cat. #AP9427a) in mouse NIH-3T3 cell line lysates (35ug/lane). TAC2N (arrow) was detected using the purified Pab.



Formalin-fixed and paraffin-embedded human testis tissue reacted with TAC2N Antibody (N-term), which was peroxidase-conjugated to the secondary antibody, followed by DAB staining. This data demonstrates the use of this antibody for immunohistochemistry; clinical relevance has not been evaluated.

Please note: All products are 'FOR RESEARCH USE ONLY. NOT FOR USE IN DIAGNOSTIC OR THERAPEUTIC PROCEDURES'.