

SERPINA9 Antibody (Center)

Affinity Purified Rabbit Polyclonal Antibody (Pab)

Catalog # AP9431c

Product Information

Application	IHC-P, FC, E
Primary Accession	Q86WD7
Reactivity	Human
Host	Rabbit
Clonality	Polyclonal
Isotype	Rabbit IgG
Calculated MW	46557
Antigen Region	194-222

Additional Information

Gene ID	327657
Other Names	Serpin A9, Centerin, Germinal center B-cell-expressed transcript 1 protein, SERPINA9, GCET1, SERPINA11
Target/Specificity	This SERPINA9 antibody is generated from rabbits immunized with a KLH conjugated synthetic peptide between 194-222 amino acids from the Central region of human SERPINA9.
Dilution	IHC-P~~1:100~500 FC~~1:10~50 E~~Use at an assay dependent concentration.
Format	Purified polyclonal antibody supplied in PBS with 0.09% (W/V) sodium azide. This antibody is purified through a protein A column, followed by peptide affinity purification.
Storage	Maintain refrigerated at 2-8°C for up to 2 weeks. For long term storage store at -20°C in small aliquots to prevent freeze-thaw cycles.
Precautions	SERPINA9 Antibody (Center) is for research use only and not for use in diagnostic or therapeutic procedures.

Protein Information

Name	SERPINA9
Synonyms	GCET1, SERPINA11
Function	Protease inhibitor that inhibits trypsin and trypsin-like serine proteases (in vitro). Inhibits plasmin and thrombin with lower efficiency (in vitro).

Cellular Location	[Isoform 1]: Secreted. [Isoform 3]: Cytoplasm. [Isoform 5]: Cytoplasm. [Isoform 7]: Membrane; Single-pass type II membrane protein
Tissue Location	Highly expressed in normal germinal center (GC) B- cells and GC B-cell-derived malignancies.

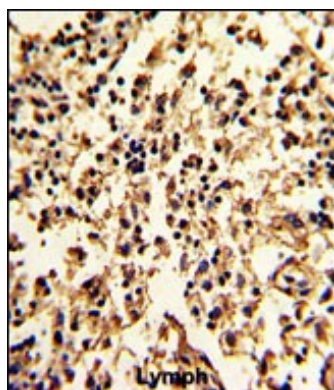
Background

SERPINA9 is a protease inhibitor that inhibits trypsin and trypsin-like serine proteases (in vitro). This protein inhibits plasmin and thrombin with lower efficiency (in vitro).

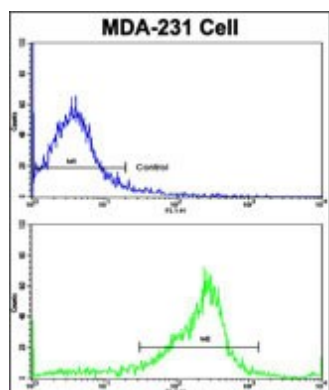
References

Luke, M.M., et al. Stroke 40(2):363-368(2009) Paterson, M.A., et al. Am. J. Clin. Pathol. 130(1):117-126(2008) Montes-Moreno, S., et al. Blood 111(1):351-358(2008) Shiffman, D., et al. Arterioscler. Thromb. Vasc. Biol. 28(1):173-179(2008) Morrison, A.C., et al. Cerebrovasc. Dis. 26(4):420-424(2008)

Images



Formalin-fixed and paraffin-embedded human lymph with SERPINA9 Antibody (Center), which was peroxidase-conjugated to the secondary antibody, followed by DAB staining. This data demonstrates the use of this antibody for immunohistochemistry; clinical relevance has not been evaluated.



Flow cytometric analysis of MDA-231 cells using SERPINA9 Antibody (Center)(bottom histogram) compared to a negative control cell (top histogram). FITC-conjugated goat-anti-rabbit secondary antibodies were used for the analysis.

Citations

- [Germinal center B-cell-like diffuse large B-cell lymphoma of the duodenum is associated with t\(14;18\) translocation.](#)

Please note: All products are 'FOR RESEARCH USE ONLY. NOT FOR USE IN DIAGNOSTIC OR THERAPEUTIC PROCEDURES'.