

SERPINA1 Antibody (Center)

Purified Rabbit Polyclonal Antibody (Pab)

Catalog # AP9431d

Product Information

Application	WB, E
Primary Accession	P01009
Reactivity	Human
Host	Rabbit
Clonality	Polyclonal
Isotype	Rabbit IgG
Clone Names	RB18481
Calculated MW	46737
Antigen Region	158-187

Additional Information

Gene ID	5265
Other Names	Alpha-1-antitrypsin, Alpha-1 protease inhibitor, Alpha-1-antiproteinase, Serpin A1, Short peptide from AAT, SPAAT, SERPINA1, AAT, PI
Target/Specificity	This SERPINA1 antibody is generated from rabbits immunized with a KLH conjugated synthetic peptide between 158-187 amino acids from the Central region of human SERPINA1.
Dilution	WB~~1:1000 E~~Use at an assay dependent concentration.
Format	Purified polyclonal antibody supplied in PBS with 0.09% (W/V) sodium azide. This antibody is prepared by Saturated Ammonium Sulfate (SAS) precipitation followed by dialysis against PBS.
Storage	Maintain refrigerated at 2-8°C for up to 2 weeks. For long term storage store at -20°C in small aliquots to prevent freeze-thaw cycles.
Precautions	SERPINA1 Antibody (Center) is for research use only and not for use in diagnostic or therapeutic procedures.

Protein Information

Name	SERPINA1 (HGNC:8941)
Synonyms	AAT, PI
Function	Inhibitor of serine proteases. Its primary target is elastase, but it also has a moderate affinity for plasmin and thrombin. Irreversibly inhibits trypsin,

chymotrypsin and plasminogen activator. The aberrant form inhibits insulin-induced NO synthesis in platelets, decreases coagulation time and has proteolytic activity against insulin and plasmin.

Cellular Location

Secreted. Endoplasmic reticulum. Note=The S and Z allele are not secreted effectively and accumulate intracellularly in the endoplasmic reticulum

Tissue Location

Ubiquitous. Expressed in leukocytes and plasma.

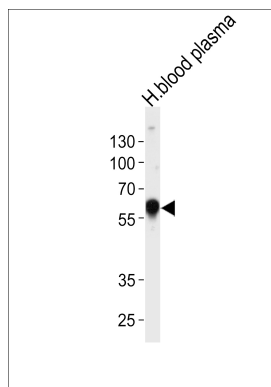
Background

SERPINA1 is secreted and is a serine protease inhibitor whose targets include elastase, plasmin, thrombin, trypsin, chymotrypsin, and plasminogen activator. Defects in this gene can cause emphysema or liver disease.

References

Kilty, S.J., et al. Am J Rhinol Allergy 24 (1), E4-E9 (2010)
Kok, K.F., et al. BMC Gastroenterol 10, 22 (2010)
Dahl, M. Clin Respir J 3(2):121-122(2009)
Zhang, H., et al. Nat. Biotechnol. 21(6):660-666(2003)
Mills, K., et al. Glycobiology 13(2):73-85(2003)

Images



Western blot analysis of lysate from human blood plasma tissue lysate, using SERPINA1 Antibody (Center)(Cat. #AP9431d). AP9431d was diluted at 1:1000 at each lane. A goat anti-rabbit IgG H&L(HRP) at 1:5000 dilution was used as the secondary antibody. Lysate at 35ug per lane.

Please note: All products are 'FOR RESEARCH USE ONLY. NOT FOR USE IN DIAGNOSTIC OR THERAPEUTIC PROCEDURES'.