

IL2RG Antibody (N-term)

Affinity Purified Rabbit Polyclonal Antibody (Pab)

Catalog # AP9450a

Product Information

Application	WB, FC, IF, E
Primary Accession	P31785
Reactivity	Human
Host	Rabbit
Clonality	Polyclonal
Isotype	Rabbit IgG
Clone Names	RB22117
Calculated MW	42287
Antigen Region	76-101

Additional Information

Gene ID	3561
Other Names	Cytokine receptor common subunit gamma, Interleukin-2 receptor subunit gamma, IL-2 receptor subunit gamma, IL-2R subunit gamma, IL-2RG, gammaC, p64, CD132, IL2RG
Target/Specificity	This IL2RG antibody is generated from rabbits immunized with a KLH conjugated synthetic peptide between 76-101 amino acids from the N-terminal region of human IL2RG.
Dilution	WB~~1:1000 FC~~1:10~50 IF~~1:25 E~~Use at an assay dependent concentration.
Format	Purified polyclonal antibody supplied in PBS with 0.09% (W/V) sodium azide. This antibody is purified through a protein A column, followed by peptide affinity purification.
Storage	Maintain refrigerated at 2-8°C for up to 2 weeks. For long term storage store at -20°C in small aliquots to prevent freeze-thaw cycles.
Precautions	IL2RG Antibody (N-term) is for research use only and not for use in diagnostic or therapeutic procedures.

Protein Information

Name	IL2RG
Function	Common subunit for the receptors for a variety of interleukins. Probably in association with IL15RA, involved in the stimulation of neutrophil

phagocytosis by IL15 (PubMed:[15123770](#)).

Cellular Location

Cell membrane; Single-pass type I membrane protein. Cell surface

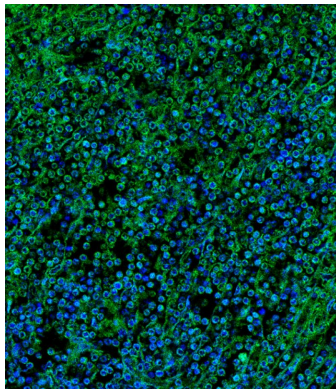
Background

IL2RG is an important signaling component of many interleukin receptors, including those of interleukin -2, -4, -7 and -21, and is thus referred to as the common gamma chain. Mutations in this gene cause X-linked severe combined immunodeficiency (XSCID), as well as X-linked combined immunodeficiency (XCID), a less severe immunodeficiency disorder.

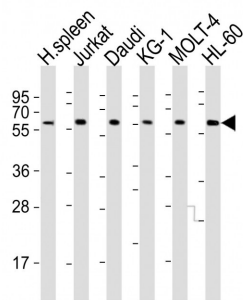
References

Ross, J.A., et al. J. Biol. Chem. 285(6):3582-3591(2010)
Ameratunga, R., et al. N. Z. Med. J. 122(1304):46-53(2009)
Clark, P.A., et al. Hum. Genet. 96(4):427-432(1995)

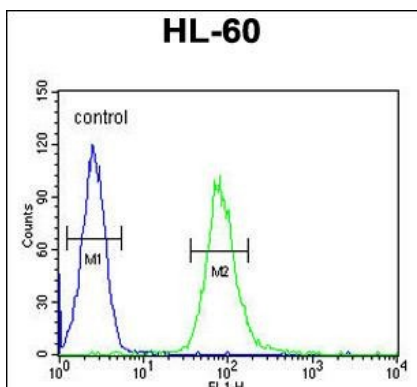
Images



Immunofluorescent analysis of 4% paraformaldehyde-fixed, 0.1% Triton X-100 permeabilized human spleen tissue labeling IL2RG with AP9450a at 1/25 dilution, followed by Alexa Fluor 488-conjugated goat anti-rabbit IgG (1583138) secondary antibody at 1/400 dilution (green). Confocal image showing membrane staining on human spleen tissue. The nuclear counter stain is DAPI (blue).



All lanes : Anti-IL2RG Antibody (N-term) at 1:2000 dilution
Lane 1: human spleen lysates Lane 2: Jurkat whole cell lysates Lane 3: Daudi whole cell lysates Lane 4: KG-1 whole cell lysates Lane 5: MOLT-4 whole cell lysates Lane 6: HL-60 whole cell lysates Lysates/proteins at 20 µg per lane. Secondary Goat Anti-Rabbit IgG, (H+L), Peroxidase conjugated at 1/10000 dilution Predicted band size : 42 kDa Blocking/Dilution buffer: 5% NFDM/TBST.



IL2RG Antibody (N-term) (Cat. #AP9450a) flow cytometric analysis of HL-60 cells (right histogram) compared to a negative control cell (left histogram). FITC-conjugated goat-anti-rabbit secondary antibodies were used for the analysis.

Please note: All products are 'FOR RESEARCH USE ONLY. NOT FOR USE IN DIAGNOSTIC OR THERAPEUTIC PROCEDURES'.