

# IL2RG Antibody (Center)

Purified Rabbit Polyclonal Antibody (Pab)

Catalog # AP9450c

## Product Information

---

<b>Application</b>	WB, E
<b>Primary Accession</b>	<a href="#">P31785</a>
<b>Reactivity</b>	Human, Mouse
<b>Host</b>	Rabbit
<b>Clonality</b>	Polyclonal
<b>Isotype</b>	Rabbit IgG
<b>Clone Names</b>	RB21006
<b>Calculated MW</b>	42287
<b>Antigen Region</b>	200-229

## Additional Information

---

<b>Gene ID</b>	3561
<b>Other Names</b>	Cytokine receptor common subunit gamma, Interleukin-2 receptor subunit gamma, IL-2 receptor subunit gamma, IL-2R subunit gamma, IL-2RG, gammaC, p64, CD132, IL2RG
<b>Target/Specificity</b>	This IL2RG antibody is generated from rabbits immunized with a KLH conjugated synthetic peptide between 200-229 amino acids from the Central region of human IL2RG.
<b>Dilution</b>	WB~~1:1000 E~~Use at an assay dependent concentration.
<b>Format</b>	Purified polyclonal antibody supplied in PBS with 0.09% (W/V) sodium azide. This antibody is purified through a protein A column, followed by peptide affinity purification.
<b>Storage</b>	Maintain refrigerated at 2-8°C for up to 2 weeks. For long term storage store at -20°C in small aliquots to prevent freeze-thaw cycles.
<b>Precautions</b>	IL2RG Antibody (Center) is for research use only and not for use in diagnostic or therapeutic procedures.

## Protein Information

---

<b>Name</b>	IL2RG
<b>Function</b>	Common subunit for the receptors for a variety of interleukins. Probably in association with IL15RA, involved in the stimulation of neutrophil phagocytosis by IL15 (PubMed: <a href="#">15123770</a> ).

**Cellular Location**

Cell membrane; Single-pass type I membrane protein. Cell surface

**Background**

---

IL2RG is an important signaling component of many interleukin receptors, including those of interleukin -2, -4, -7 and -21, and is thus referred to as the common gamma chain.

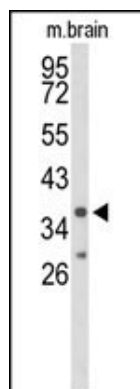
**References**

---

Ross, J.A., et al. J. Biol. Chem. 285(6):3582-3591(2010)  
Ameratunga, R., et al. N. Z. Med. J. 122(1304):46-53(2009)  
Clark, P.A., et al. Hum. Genet. 96(4):427-432(1995)  
Ohbo, K., et al. J. Biol. Chem. 270(13):7479-7486(1995)  
Bamborough, P., et al. Structure 2(9):839-851(1994)

**Images**

---



Western blot analysis of IL2RG Antibody (Center) (Cat. #AP9450c) in mouse brain tissue lysates (35ug/lane). IL2RG (arrow) was detected using the purified Pab.

Please note: All products are 'FOR RESEARCH USE ONLY. NOT FOR USE IN DIAGNOSTIC OR THERAPEUTIC PROCEDURES'.