

PREX1 Antibody (Center)

Affinity Purified Rabbit Polyclonal Antibody (Pab)

Catalog # AP9461c

Product Information

Application	WB, E
Primary Accession	Q8TCU6
Reactivity	Human
Host	Rabbit
Clonality	Polyclonal
Isotype	Rabbit IgG
Clone Names	RB22416
Calculated MW	186203
Antigen Region	567-594

Additional Information

Gene ID	57580
Other Names	Phosphatidylinositol 3, 5-trisphosphate-dependent Rac exchanger 1 protein, P-Rex1, PtdIns(3, 5)-dependent Rac exchanger 1, PREX1, KIAA1415
Target/Specificity	This PREX1 antibody is generated from rabbits immunized with a KLH conjugated synthetic peptide between 567-594 amino acids from the Central region of human PREX1.
Dilution	WB~~1:1000 E~~Use at an assay dependent concentration.
Format	Purified polyclonal antibody supplied in PBS with 0.09% (W/V) sodium azide. This antibody is purified through a protein A column, followed by peptide affinity purification.
Storage	Maintain refrigerated at 2-8°C for up to 2 weeks. For long term storage store at -20°C in small aliquots to prevent freeze-thaw cycles.
Precautions	PREX1 Antibody (Center) is for research use only and not for use in diagnostic or therapeutic procedures.

Protein Information

Name	PREX1
Synonyms	KIAA1415
Function	Functions as a RAC guanine nucleotide exchange factor (GEF), which activates the Rac proteins by exchanging bound GDP for free GTP. Its activity

is synergistically activated by phosphatidylinositol 3,4,5-trisphosphate and the beta gamma subunits of heterotrimeric G protein. May function downstream of heterotrimeric G proteins in neutrophils.

Cellular Location

Cytoplasm, cytosol. Cell membrane. Note=Mainly cytosolic. Some amount is apparently associated to the plasma membrane

Tissue Location

Mainly expressed in peripheral blood leukocytes and brain. Expressed at intermediate level in spleen and lymph nodes, and weakly expressed in other tissues

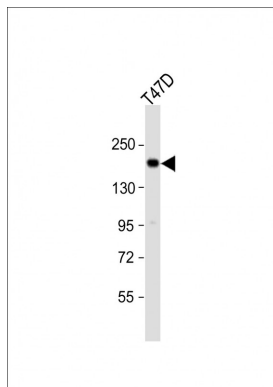
Background

The protein encoded by this gene acts as a guanine nucleotide exchange factor for the RHO family of small GTP-binding proteins (RACs). It has been shown to bind to and activate RAC1 by exchanging bound GDP for free GTP. The encoded protein, which is found mainly in the cytoplasm, is activated by phosphatidylinositol-3,4,5-trisphosphate and the beta-gamma subunits of heterotrimeric G proteins.

References

- Carretero-Ortega, J., et al. Mol. Pharmacol. 77(3):435-442(2010)
Ledezma-Sanchez, B.A., et al. Biochem. Biophys. Res. Commun. 391(4):1647-1652(2010)
Takefuji, M., et al. J. Hum. Genet. 55(1):42-49(2010)
Qin, J., et al. Oncogene 28(16):1853-1863(2009)
Waters, J.E., et al. J. Cell. Sci. 121 (PT 17), 2892-2903 (2008)
Sugiyama, N., et al. Mol. Cell Proteomics 6(6):1103-1109(2007)
Weiner, O.D. Curr. Biol. 12 (12), R429-R431 (2002)

Images



Anti-PREX1 Antibody (Center) at 1:1000 dilution + T47D whole cell lysate Lysates/proteins at 20 µg per lane. Secondary Goat Anti-Rabbit IgG, (H+L), Peroxidase conjugated at 1/10000 dilution. Predicted band size : 186 kDa Blocking/Dilution buffer: 5% NFDM/TBST.

Please note: All products are 'FOR RESEARCH USE ONLY. NOT FOR USE IN DIAGNOSTIC OR THERAPEUTIC PROCEDURES'.