

# DBC1 Antibody (N-term)

Affinity Purified Rabbit Polyclonal Antibody (Pab)

Catalog # AP9464a

## Product Information

---

<b>Application</b>	WB, E
<b>Primary Accession</b>	<a href="#">Q60477</a>
<b>Other Accession</b>	<a href="#">Q925T8</a> , <a href="#">Q920P3</a> , <a href="#">Q7ZZR3</a> , <a href="#">Q5E9L2</a>
<b>Reactivity</b>	Human, Mouse
<b>Predicted</b>	Bovine, Chicken, Rat
<b>Host</b>	Rabbit
<b>Clonality</b>	Polyclonal
<b>Isotype</b>	Rabbit IgG
<b>Clone Names</b>	RB22619
<b>Calculated MW</b>	88760
<b>Antigen Region</b>	85-111

## Additional Information

---

<b>Gene ID</b>	1620
<b>Other Names</b>	BMP/retinoic acid-inducible neural-specific protein 1, Deleted in bladder cancer protein 1, BRINP1, DBC1, DBCCR1, FAM5A
<b>Target/Specificity</b>	This DBC1 antibody is generated from rabbits immunized with a KLH conjugated synthetic peptide between 85-111 amino acids from the N-terminal region of human DBC1.
<b>Dilution</b>	WB~~1:1000 E~~Use at an assay dependent concentration.
<b>Format</b>	Purified polyclonal antibody supplied in PBS with 0.09% (W/V) sodium azide. This antibody is purified through a protein A column, followed by peptide affinity purification.
<b>Storage</b>	Maintain refrigerated at 2-8°C for up to 2 weeks. For long term storage store at -20°C in small aliquots to prevent freeze-thaw cycles.
<b>Precautions</b>	DBC1 Antibody (N-term) is for research use only and not for use in diagnostic or therapeutic procedures.

## Protein Information

---

<b>Name</b>	BRINP1
<b>Synonyms</b>	DBC1, DBCCR1, FAM5A

<b>Function</b>	Plays a role in neurogenesis and brain development (By similarity). May suppress cell cycle progression in postmitotic neurons by inhibiting G1/S transition (PubMed: <a href="#">11420708</a> ).
<b>Cellular Location</b>	Cytoplasm
<b>Tissue Location</b>	Highly expressed in brain. Weakly expressed in heart, lung, skeletal muscle, kidney, thymus, prostate, testis and small intestine.

## Background

---

DBC1 is located within a chromosomal region that shows loss of heterozygosity in some bladder cancers. It contains a 5' CpG island that may be a frequent target of hypermethylation, and it may undergo hypermethylation-based silencing in some bladder cancers.

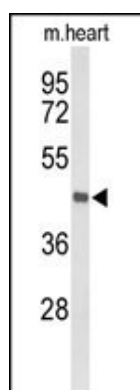
## References

---

Koyama, S., et al. Biochem. Biophys. Res. Commun. 392(3):357-362(2010)  
Gronbaek, K., et al. Mod. Pathol. 21(5):632-638(2008)  
Louhelainen, J.P., et al. Oncogene 25(16):2409-2419(2006)  
Izumi, H., et al. Hum. Mol. Genet. 14(8):997-1007(2005)  
Beetz, C., et al. Oncol. Rep. 13(2):335-340(2005)  
Nishiyama, H., et al. Oncogene 20(23):2956-2964(2001)

## Images

---



Western blot analysis of DBC1 Antibody (N-term) (Cat. #AP9464a) in mouse heart tissue lysates (35ug/lane). DBC1 (arrow) was detected using the purified Pab.

Please note: All products are 'FOR RESEARCH USE ONLY. NOT FOR USE IN DIAGNOSTIC OR THERAPEUTIC PROCEDURES'.