

NPY2R Antibody (N-term)

Affinity Purified Rabbit Polyclonal Antibody (Pab)

Catalog # AP9466a

Product Information

Application	WB, E
Primary Accession	P49146
Other Accession	P97295
Reactivity	Human, Mouse
Host	Rabbit
Clonality	Polyclonal
Isotype	Rabbit IgG
Clone Names	RB22922
Calculated MW	42731
Antigen Region	19-45

Additional Information

Gene ID	4887
Other Names	Neuropeptide Y receptor type 2, NPY2-R, NPY-Y2 receptor, Y2 receptor, NPY2R
Target/Specificity	This NPY2R antibody is generated from rabbits immunized with a KLH conjugated synthetic peptide between 19-45 amino acids from the N-terminal region of human NPY2R.
Dilution	WB~~1:1000 E~~Use at an assay dependent concentration.
Format	Purified polyclonal antibody supplied in PBS with 0.09% (W/V) sodium azide. This antibody is purified through a protein A column, followed by peptide affinity purification.
Storage	Maintain refrigerated at 2-8°C for up to 2 weeks. For long term storage store at -20°C in small aliquots to prevent freeze-thaw cycles.
Precautions	NPY2R Antibody (N-term) is for research use only and not for use in diagnostic or therapeutic procedures.

Protein Information

Name	NPY2R
Function	Receptor for neuropeptide Y and peptide YY. The rank order of affinity of this receptor for pancreatic polypeptides is PYY > NPY > PYY (3-36) > NPY (2-36) > [Ile-31, Gln-34] PP > [Leu-31, Pro-34] NPY > PP, [Pro-34] PYY and NPY free acid.

Cellular Location	Cell membrane; Multi-pass membrane protein.
Tissue Location	High levels in amygdala, corpus callosum, hippocampus and subthalamic nucleus. Also detectable in caudate nucleus, hypothalamus and substantia nigra

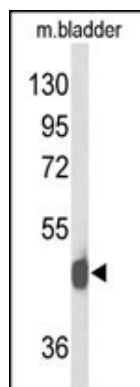
Background

Receptor for neuropeptide Y and peptide YY. The rank order of affinity of this receptor for pancreatic polypeptides is PYY > NPY > PYY (3-36) > NPY (2-36) > [Ile-31, Gln-34] PP > [Leu-31, Pro-34] NPY > PP, [Pro-34] PYY and NPY free acid.

References

- ?Shoblock, J.R., et al. Psychopharmacology (Berl.) 208(2):265-277(2010)
 ?Arnett, D.K., et al. J. Hypertens. 27(8):1585-1593(2009)
 ?Zhang, J., et al. Zhonghua Liu Xing Bing Xue Za Zhi 30(7):695-698(2009)

Images



Please note: All products are 'FOR RESEARCH USE ONLY. NOT FOR USE IN DIAGNOSTIC OR THERAPEUTIC PROCEDURES'.