

# AD7c-NTP Rabbit pAb

AD7c-NTP Rabbit pAb  
Catalog # AP94710

## Product Information

---

<b>Application</b>	WB
<b>Reactivity</b>	Human
<b>Host</b>	Rabbit
<b>Clonality</b>	Polyclonal
<b>Calculated MW</b>	41 KDa
<b>Physical State</b>	Liquid
<b>Immunogen</b>	KLH conjugated synthetic peptide derived from human Neuronal thread protein AD7c-NTP
<b>Epitope Specificity</b>	301-375/375
<b>Isotype</b>	IgG
<b>Purity</b>	affinity purified by Protein A
<b>Buffer</b>	Preservative: 0.02% Proclin300, Constituents: 1% BSA, 0.01M PBS, pH7.4.
<b>Important Note</b>	This product as supplied is intended for research use only, not for use in human, therapeutic or diagnostic applications.
<b>Background Descriptions</b>	AD7c-NTP is detected in increased concentration in the cortical neurons, brain-tissue extracts, cerebrospinal fluid, and urine early in the course of AD neurodegeneration, and its level is positively correlated with the severity of dementia. All these characteristics make it a possible biomarker for AD.

## Additional Information

---

<b>Dilution</b>	WB=1:500-2000,Flow-Cyt=1ug/Test
<b>Storage</b>	Store at -20 °C for one year. Avoid repeated freeze/thaw cycles. When reconstituted in sterile pH 7.4 0.01M PBS or diluent of antibody the antibody is stable for at least two weeks at 2-4 °C.

## Background

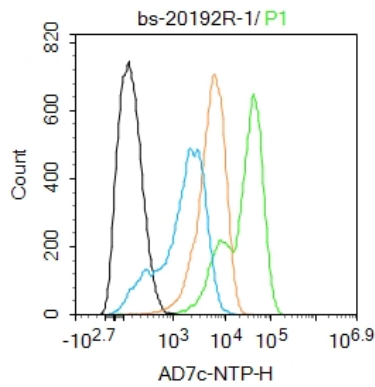
---

AD7c-NTP is detected in increased concentration in the cortical neurons, brain-tissue extracts, cerebrospinal fluid, and urine early in the course of AD neurodegeneration, and its level is positively correlated with the severity of dementia. All these characteristics make it a possible biomarker for AD.

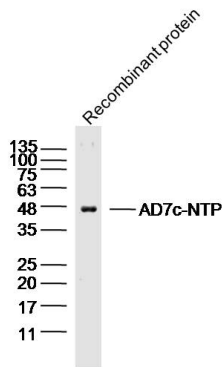
## Images

---

Blank control(black line):U87MG.  
Primary Antibody (green line): Rabbit Anti-AD7c-NTP  
antibody (AP94710)  
Dilution:1ug/Test;



Secondary Antibody : Goat anti-rabbit IgG-AF488  
 Dilution: 0.5ug/Test.  
 Negative control(white blue line): PBS  
 Isotype control(orange line): Normal Rabbit IgG  
 Protocol  
 The cells were fixed with 4% PFA (10min at room temperature)and then permeabilized with 90% ice-cold methanol for 20 min at -20°C.The cells were then incubated in 5%BSA to block non-specific protein-protein interactions for 30 min at room temperature .Cells stained with Primary Antibody for 30 min at room temperature. The secondary antibody used for 40 min at room temperature. Acquisition of 20,000 events was performed.



Sample: AD7c-NTP recombinant protein(Human) Lysate at 100ng  
 Primary: Anti-AD7c-NTP(AP94710)at 1/300 dilution  
 Secondary: IRDye800CW Goat Anti-RabbitIgG at 1/20000 dilution  
 Predicted band size: 41kD  
 Observed band size: 46kD

Please note: All products are 'FOR RESEARCH USE ONLY. NOT FOR USE IN DIAGNOSTIC OR THERAPEUTIC PROCEDURES'.