

GPR160 Antibody (C-term)

Affinity Purified Rabbit Polyclonal Antibody (Pab)

Catalog # AP9500b

Product Information

| | |
|--------------------------|------------------------|
| Application | WB, E |
| Primary Accession | Q9UJ42 |
| Reactivity | Human, Mouse |
| Host | Rabbit |
| Clonality | Polyclonal |
| Isotype | Rabbit IgG |
| Clone Names | RB23999 |
| Calculated MW | 39787 |
| Antigen Region | 305-332 |

Additional Information

| | |
|---------------------------|--|
| Gene ID | 26996 |
| Other Names | Probable G-protein coupled receptor 160, G-protein coupled receptor GPCR1, hGPCR1, GPR160, GPCR150 |
| Target/Specificity | This GPR160 antibody is generated from rabbits immunized with a KLH conjugated synthetic peptide between 305-332 amino acids from the C-terminal region of human GPR160. |
| Dilution | WB~~1:1000 E~~Use at an assay dependent concentration. |
| Format | Purified polyclonal antibody supplied in PBS with 0.09% (W/V) sodium azide. This antibody is purified through a protein A column, followed by peptide affinity purification. |
| Storage | Maintain refrigerated at 2-8°C for up to 2 weeks. For long term storage store at -20°C in small aliquots to prevent freeze-thaw cycles. |
| Precautions | GPR160 Antibody (C-term) is for research use only and not for use in diagnostic or therapeutic procedures. |

Protein Information

| | |
|-----------------|------------------|
| Name | GPR160 |
| Synonyms | GPCR150 |
| Function | Orphan receptor. |

Cellular Location

Cell membrane; Multi-pass membrane protein.

Background

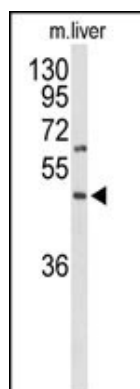
GPR160 is an orphan receptor.

References

Yoshida, T., et al. Int. J. Mol. Med. 25(4):649-656(2010)

Oguri, M., et al. Am. J. Hypertens. 23(1):70-77(2010)

Images



Western blot analysis of GPR160 Antibody (C-term) (Cat. #AP9500b) in mouse liver tissue lysates (35ug/lane). GPR160 (arrow) was detected using the purified Pab.

Please note: All products are 'FOR RESEARCH USE ONLY. NOT FOR USE IN DIAGNOSTIC OR THERAPEUTIC PROCEDURES'.