

LDHA Antibody (Center)

Affinity Purified Rabbit Polyclonal Antibody (Pab)

Catalog # AP9523c

Product Information

Application	WB, IHC-P, FC, E
Primary Accession	P00338
Other Accession	P04642 , P00339 , Q9BE24 , P19858
Reactivity	Human, Rat
Predicted	Bovine, Monkey, Pig, Rat
Host	Rabbit
Clonality	Polyclonal
Isotype	Rabbit IgG
Clone Names	RB24077
Calculated MW	36689
Antigen Region	154-182

Additional Information

Gene ID	3939
Other Names	L-lactate dehydrogenase A chain, LDH-A, Cell proliferation-inducing gene 19 protein, LDH muscle subunit, LDH-M, Renal carcinoma antigen NY-REN-59, LDHA
Target/Specificity	This LDHA antibody is generated from rabbits immunized with a KLH conjugated synthetic peptide between 154-182 amino acids from the Central region of human LDHA.
Dilution	WB~~1:1000 IHC-P~~1:100~500 FC~~1:10~50 E~~Use at an assay dependent concentration.
Format	Purified polyclonal antibody supplied in PBS with 0.09% (W/V) sodium azide. This antibody is purified through a protein A column, followed by peptide affinity purification.
Storage	Maintain refrigerated at 2-8°C for up to 2 weeks. For long term storage store at -20°C in small aliquots to prevent freeze-thaw cycles.
Precautions	LDHA Antibody (Center) is for research use only and not for use in diagnostic or therapeutic procedures.

Protein Information

Name	LDHA (HGNC:6535)
-------------	------------------------------------

Function	Interconverts simultaneously and stereospecifically pyruvate and lactate with concomitant interconversion of NADH and NAD(+).
Cellular Location	Cytoplasm.
Tissue Location	Predominantly expressed in anaerobic tissues such as skeletal muscle and liver.

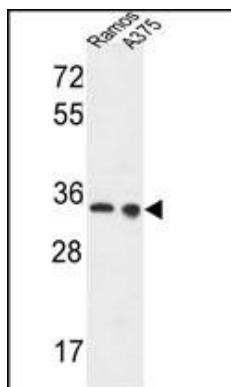
Background

LDHA catalyzes the conversion of L-lactate and NAD to pyruvate and NADH in the final step of anaerobic glycolysis. The protein is found predominantly in muscle tissue and belongs to the lactate dehydrogenase family. Mutations in this gene have been linked to exertional myoglobinuria.

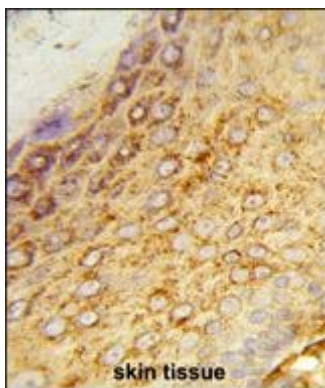
References

Zhu, X., et al. Genet. Epidemiol. 34(2):171-187(2010)
 Zhuang, L., et al. Mod. Pathol. 23(1):45-53(2010)
 Zhao, Y.H., et al. Oncogene 28(42):3689-3701(2009)
 Xie, H., et al. Mol. Cancer Ther. 8(3):626-635(2009)
 Koukourakis, M.I., et al. Oncology 77(5):285-292(2009)
 Rikova, K., et al. Cell 131(6):1190-1203(2007)
 Rush, J., et al. Nat. Biotechnol. 23(1):94-101(2005)

Images

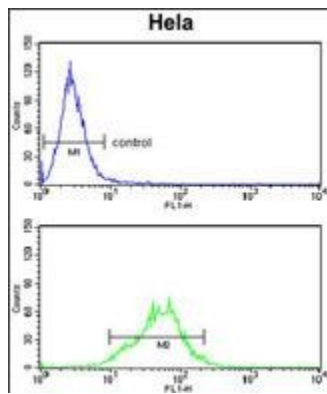


LDHA Antibody (Center) (Cat. #AP9523c) western blot analysis in Ramos,A375 cell line lysates (35ug/lane).This demonstrates the LDHA antibody detected the LDHA protein (arrow).



Formalin-fixed and paraffin-embedded human skin tissue reacted with LDHA Antibody (Center), which was peroxidase-conjugated to the secondary antibody, followed by DAB staining. This data demonstrates the use of this antibody for immunohistochemistry; clinical relevance has not been evaluated.

LDHA Antibody (Center) (Cat. #AP9523c) flow cytometry analysis of Hela cells (bottom histogram) compared to a negative control cell (top histogram).FITC-conjugated goat-anti-rabbit secondary antibodies were used for the



analysis.

Citations

- [The molecular mechanism and clinical significance of LDHA in HER2-mediated progression of gastric cancer.](#)
- [The cellular and compartmental profile of mouse retinal glycolysis, tricarboxylic acid cycle, oxidative phosphorylation, and ~P transferring kinases.](#)

Please note: All products are 'FOR RESEARCH USE ONLY. NOT FOR USE IN DIAGNOSTIC OR THERAPEUTIC PROCEDURES'.