

RPL31 Antibody (Center)

Affinity Purified Rabbit Polyclonal Antibody (Pab)

Catalog # AP9532c

Product Information

Application	WB, IHC-P, FC, E
Primary Accession	P62899
Other Accession	Q6NUH0 , P62902 , P62901 , P62900 , Q56JX3 , NP_001092047
Reactivity	Human
Predicted	Bovine, Mouse, Pig, Rat, Xenopus
Host	Rabbit
Clonality	Polyclonal
Isotype	Rabbit IgG
Clone Names	RB24108
Calculated MW	14463
Antigen Region	24-51

Additional Information

Gene ID	6160
Other Names	60S ribosomal protein L31, RPL31
Target/Specificity	This RPL31 antibody is generated from rabbits immunized with a KLH conjugated synthetic peptide between 24-51 amino acids from the Central region of human RPL31.
Dilution	WB~~1:1000 IHC-P~~1:100~500 FC~~1:10~50 E~~Use at an assay dependent concentration.
Format	Purified polyclonal antibody supplied in PBS with 0.09% (W/V) sodium azide. This antibody is purified through a protein A column, followed by peptide affinity purification.
Storage	Maintain refrigerated at 2-8°C for up to 2 weeks. For long term storage store at -20°C in small aliquots to prevent freeze-thaw cycles.
Precautions	RPL31 Antibody (Center) is for research use only and not for use in diagnostic or therapeutic procedures.

Protein Information

Name	RPL31
Function	Component of the large ribosomal subunit (PubMed: 23636399 , PubMed: 32669547). The ribosome is a large ribonucleoprotein complex

responsible for the synthesis of proteins in the cell (PubMed:[23636399](#), PubMed:[32669547](#)).

Cellular Location

Cytoplasm.

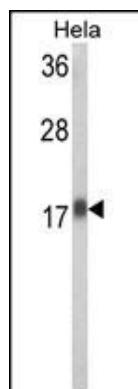
Background

Ribosomes, the organelles that catalyze protein synthesis, consist of a small 40S subunit and a large 60S subunit. Together these subunits are composed of 4 RNA species and approximately 80 structurally distinct proteins. RPL31 is a ribosomal protein that is a component of the 60S subunit. The protein belongs to the L31E family of ribosomal proteins. It is located in the cytoplasm.

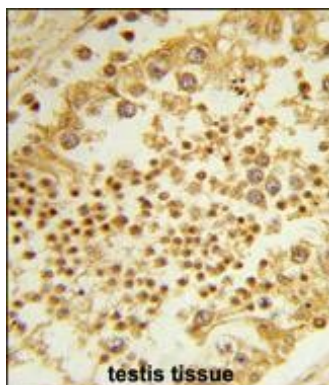
References

Ewing, R.M., et al. Mol. Syst. Biol. 3, 89 (2007) :
Olsen, J.V., et al. Cell 127(3):635-648(2006)
Olsen, J.V., et al. Cell 127(3):635-648(2006)
Hillier, L.W., et al. Nature 434(7034):724-731(2005)
Rush, J., et al. Nat. Biotechnol. 23(1):94-101(2005)
Rush, J., et al. Nat. Biotechnol. 23(1):94-101(2005)

Images

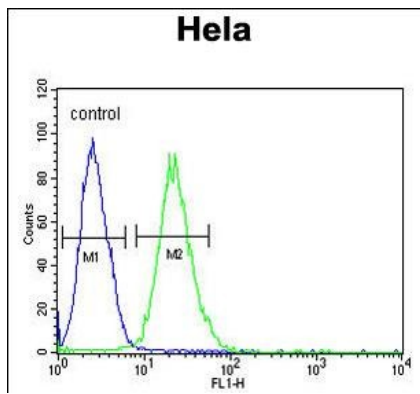


Western blot analysis of RPL31 Antibody (Center) (Cat. #AP9532c) in HeLa cell line lysates (35ug/lane). RPL31 (arrow) was detected using the purified Pab.



Formalin-fixed and paraffin-embedded human testis tissue reacted with RPL31 Antibody (Center), which was peroxidase-conjugated to the secondary antibody, followed by DAB staining. This data demonstrates the use of this antibody for immunohistochemistry; clinical relevance has not been evaluated.

RPL31 Antibody (Center) (Cat. #AP9532c) flow cytometric analysis of HeLa cells (right histogram) compared to a negative control cell (left histogram). FITC-conjugated goat-anti-rabbit secondary antibodies were used for the analysis.



Please note: All products are 'FOR RESEARCH USE ONLY. NOT FOR USE IN DIAGNOSTIC OR THERAPEUTIC PROCEDURES'.