

TAT Antibody (Center)

Affinity Purified Rabbit Polyclonal Antibody (Pab)

Catalog # AP9533C

Product Information

Application	WB, IHC-P, FC, E
Primary Accession	P17735
Other Accession	P04694 , Q8QZR1 , Q58CZ9 , NP_000344
Reactivity	Human, Rat, Mouse
Predicted	Bovine, Mouse, Rat
Host	Rabbit
Clonality	Polyclonal
Isotype	Rabbit IgG
Clone Names	RB24110
Calculated MW	50399
Antigen Region	279-306

Additional Information

Gene ID	6898
Other Names	Tyrosine aminotransferase, TAT, L-tyrosine:2-oxoglutarate aminotransferase, TAT
Target/Specificity	This TAT antibody is generated from rabbits immunized with a KLH conjugated synthetic peptide between 279-306 amino acids from the Central region of human TAT.
Dilution	WB~~1:1000 IHC-P~~1:100~500 FC~~1:10~50 E~~Use at an assay dependent concentration.
Format	Purified polyclonal antibody supplied in PBS with 0.05% (V/V) Proclin 300. This antibody is prepared by Saturated Ammonium Sulfate (SAS) precipitation followed by dialysis against PBS.
Storage	Maintain refrigerated at 2-8°C for up to 2 weeks. For long term storage store at -20°C in small aliquots to prevent freeze-thaw cycles.
Precautions	TAT Antibody (Center) is for research use only and not for use in diagnostic or therapeutic procedures.

Protein Information

Name	TAT
Function	Transaminase involved in tyrosine breakdown. Converts tyrosine to

p-hydroxyphenylpyruvate. Can catalyze the reverse reaction, using glutamic acid, with 2-oxoglutarate as cosubstrate (in vitro). Has much lower affinity and transaminase activity towards phenylalanine.

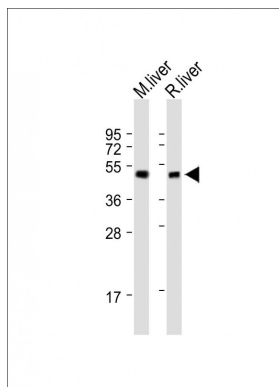
Background

TAT is a mitochondrial protein tyrosine aminotransferase which is present in the liver and catalyzes the conversion of L-tyrosine into p-hydroxyphenylpyruvate.

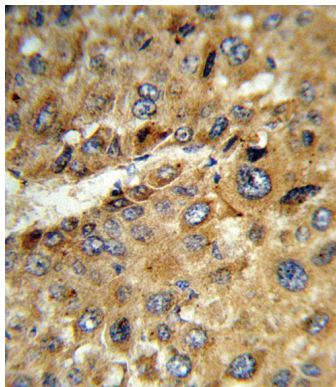
References

- Liu, S., et al. Biosci. Rep. 29(2):103-109(2009)
Pasternack, S.M., et al. Br. J. Dermatol. 160(3):704-706(2009)
Maydan, G., et al. J. Inherit. Metab. Dis. 29(5):620-626(2006)
Charfeddine, C., et al. Mol. Genet. Metab. 88(2):184-191(2006)
Baharvand, H., et al. Int. J. Dev. Biol. 50(7):645-652(2006)
Natt, E., et al. Proc. Natl. Acad. Sci. U.S.A. 89(19):9297-9301(1992)

Images

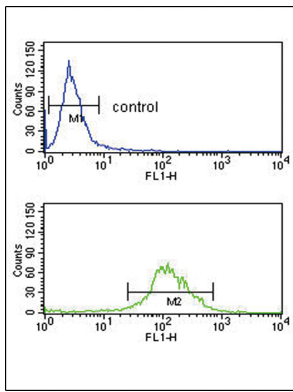


All lanes : Anti-TAT Antibody (Center) at 1:500 dilution
Lane 1: mouse liver lysate Lane 2: rat liver lysate
Lysates/proteins at 20 µg per lane. Secondary Goat Anti-Rabbit IgG, (H+L), Peroxidase conjugated (ASP1615) at 1/15000 dilution. Observed band size : 51kDa
Blocking/Dilution buffer: 5% NFDm/TBST.



Formalin-fixed and paraffin-embedded human hepatocarcinoma reacted with TAT Antibody (Center), which was peroxidase-conjugated to the secondary antibody, followed by DAB staining. This data demonstrates the use of this antibody for immunohistochemistry; clinical relevance has not been evaluated.

TAT Antibody (Center) (Cat. #AP9533c) flow cytometry analysis of K562 cells (bottom histogram) compared to a negative control cell (top histogram). FITC-conjugated goat-anti-rabbit secondary antibodies were used for the analysis.



Please note: All products are 'FOR RESEARCH USE ONLY. NOT FOR USE IN DIAGNOSTIC OR THERAPEUTIC PROCEDURES'.