

MAT2B Antibody (N-term)

Affinity Purified Rabbit Polyclonal Antibody (Pab)

Catalog # AP9534a

Product Information

Application	WB, IHC-P, E
Primary Accession	Q9NZL9
Other Accession	NP_037415
Reactivity	Human
Host	Rabbit
Clonality	Polyclonal
Isotype	Rabbit IgG
Clone Names	RB24111
Calculated MW	37552
Antigen Region	80-107

Additional Information

Gene ID	27430
Other Names	Methionine adenosyltransferase 2 subunit beta, Methionine adenosyltransferase II beta, MAT II beta, Putative dTDP-4-keto-6-deoxy-D-glucose 4-reductase, MAT2B, TGR
Target/Specificity	This MAT2B antibody is generated from rabbits immunized with a KLH conjugated synthetic peptide between 80-107 amino acids from the N-terminal region of human MAT2B.
Dilution	WB~~1:1000 IHC-P~~1:100~500 E~~Use at an assay dependent concentration.
Format	Purified polyclonal antibody supplied in PBS with 0.09% (W/V) sodium azide. This antibody is purified through a protein A column, followed by peptide affinity purification.
Storage	Maintain refrigerated at 2-8°C for up to 2 weeks. For long term storage store at -20°C in small aliquots to prevent freeze-thaw cycles.
Precautions	MAT2B Antibody (N-term) is for research use only and not for use in diagnostic or therapeutic procedures.

Protein Information

Name	MAT2B
Synonyms	TGR

Function	Regulatory subunit of S-adenosylmethionine synthetase 2, an enzyme that catalyzes the formation of S-adenosylmethionine from methionine and ATP. Regulates MAT2A catalytic activity by changing its kinetic properties, increasing its affinity for L-methionine (PubMed: 10644686 , PubMed: 23189196 , PubMed: 25075345). Can bind NADP (in vitro) (PubMed: 23189196 , PubMed: 23425511).
Tissue Location	Widely expressed.

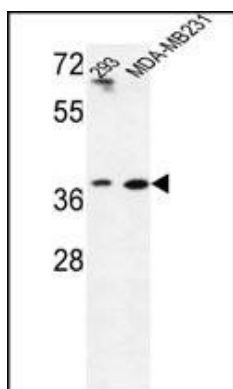
Background

MAT2B belongs to the methionine adenosyltransferase (MAT) family. MAT catalyzes the biosynthesis of S-adenosylmethionine from methionine and ATP. This protein is the regulatory beta subunit of MAT.

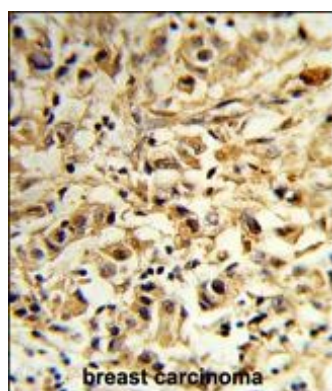
References

Martinez, C.A., et al. Am. J. Obstet. Gynecol. 201 (4), 394 (2009) :
 Boyles, A.L., et al. Genet. Epidemiol. 33(3):247-255(2009)
 Persson, B., et al. Chem. Biol. Interact. 178 (1-3), 94-98 (2009) :
 Attia, R.R., et al. J. Biol. Chem. 283(45):30788-30795(2008)
 Wang, Q., et al. World J. Gastroenterol. 14(29):4633-4642(2008)
 LeGros, L., et al. J. Biol. Chem. 276(27):24918-24924(2001)

Images



Western blot analysis of MAT2B Antibody (N-term) (Cat. #AP9534a) in 293, MDA-MB231 cell line lysates (35ug/lane). MAT2B (arrow) was detected using the purified Pab.



Formalin-fixed and paraffin-embedded human breast carcinoma reacted with MAT2B Antibody (N-term), which was peroxidase-conjugated to the secondary antibody, followed by DAB staining. This data demonstrates the use of this antibody for immunohistochemistry; clinical relevance has not been evaluated.

Please note: All products are 'FOR RESEARCH USE ONLY. NOT FOR USE IN DIAGNOSTIC OR THERAPEUTIC PROCEDURES'.