

YIPF5 Antibody (N-term)

Affinity Purified Rabbit Polyclonal Antibody (Pab)

Catalog # AP9554b

Product Information

Application	WB, IHC-P, E
Primary Accession	Q969M3
Other Accession	Q4R5M4
Reactivity	Human, Mouse
Predicted	Monkey
Host	Rabbit
Clonality	Polyclonal
Isotype	Rabbit IgG
Clone Names	RB24202
Calculated MW	27989
Antigen Region	21-49

Additional Information

Gene ID	81555
Other Names	Protein YIPF5, Five-pass transmembrane protein localizing in the Golgi apparatus and the endoplasmic reticulum 5, Smooth muscle cell-associated protein 5, SMAP-5, YIP1 family member 5, YPT-interacting protein 1 A, YIPF5, FINGER5, YIP1A
Target/Specificity	This YIPF5 antibody is generated from rabbits immunized with a KLH conjugated synthetic peptide between 21-49 amino acids from the N-terminal region of human YIPF5.
Dilution	WB~~1:1000 IHC-P~~1:100~500 E~~Use at an assay dependent concentration.
Format	Purified polyclonal antibody supplied in PBS with 0.09% (W/V) sodium azide. This antibody is purified through a protein A column, followed by peptide affinity purification.
Storage	Maintain refrigerated at 2-8°C for up to 2 weeks. For long term storage store at -20°C in small aliquots to prevent freeze-thaw cycles.
Precautions	YIPF5 Antibody (N-term) is for research use only and not for use in diagnostic or therapeutic procedures.

Protein Information

Name	YIPF5 (HGNC:24877)
-------------	--------------------------------------

Synonyms	FINGER5, YIP1A
Function	Plays a role in transport between endoplasmic reticulum and Golgi. In pancreatic beta cells, required to transport proinsulin from endoplasmic reticulum into the Golgi (PubMed: 33164986).
Cellular Location	Endoplasmic reticulum membrane {ECO:0000250 UniProtKB:Q9EQQ2}; Multi-pass membrane protein. Golgi apparatus, cis-Golgi network membrane; Multi-pass membrane protein. Cytoplasmic vesicle, COPII-coated vesicle {ECO:0000250 UniProtKB:Q5XID0}. Note=Enriched at the endoplasmic reticulum exit sites (By similarity). Incorporated into COPII-coated vesicles (By similarity). {ECO:0000250 UniProtKB:Q5XID0, ECO:0000250 UniProtKB:Q9EQQ2}
Tissue Location	Ubiquitously expressed with abundant expression in pancreatic tissue, islets, beta cells, and brain. Highly expressed in coronary smooth muscles.

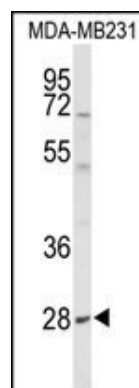
Background

Plays a role in transport between endoplasmic reticulum and Golgi.

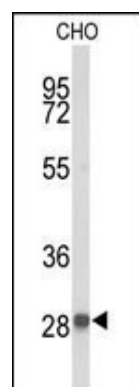
References

- ?Koskinen, L.L., et al. Tissue Antigens 74(5):408-416(2009)
- ?Kano, F., et al. J. Cell. Sci. 122 (PT 13), 2218-2227 (2009) :
- ?Yoshida, Y., et al. Exp. Cell Res. 314(19):3427-3443(2008)
- ?Jin, C., et al. Biochem. Biophys. Res. Commun. 334(1):16-22(2005)
- ?Stolle, K., et al. Gene 351, 119-130 (2005) :

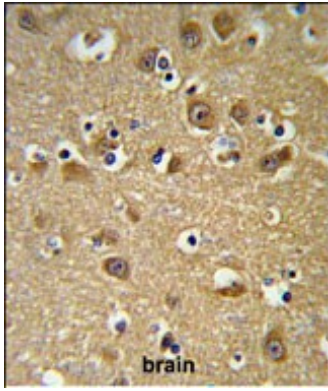
Images



Western blot analysis of YIPF5 Antibody (N-term) (Cat. #AP9554b) in MDA-MB231 cell line lysates (35ug/lane). YIPF5 (arrow) was detected using the purified Pab;



Western blot analysis of YIPF5 Antibody (N-term) (Cat. #AP9554b) in CHO cell line lysates (35ug/lane). YIPF5 (arrow) was detected using the purified Pab.



YIPF5 Antibody (N-term) (Cat. #AP9554b) IHC analysis in formalin fixed and paraffin embedded brain tissue followed by peroxidase conjugation of the secondary antibody and DAB staining. This data demonstrates the use of the YIPF5 Antibody (N-term) for immunohistochemistry. Clinical relevance has not been evaluated.

Please note: All products are 'FOR RESEARCH USE ONLY. NOT FOR USE IN DIAGNOSTIC OR THERAPEUTIC PROCEDURES'.