

## RBP2 Antibody (Center)

Affinity Purified Rabbit Polyclonal Antibody (Pab)

Catalog # AP9557b

### Product Information

---

<b>Application</b>	WB, E
<b>Primary Accession</b>	<a href="#">P50120</a>
<b>Reactivity</b>	Human
<b>Host</b>	Rabbit
<b>Clonality</b>	Polyclonal
<b>Isotype</b>	Rabbit IgG
<b>Clone Names</b>	RB24213
<b>Calculated MW</b>	15707
<b>Antigen Region</b>	56-84

### Additional Information

---

<b>Gene ID</b>	5948
<b>Other Names</b>	Retinol-binding protein 2, Cellular retinol-binding protein II, CRBP-II, RBP2, CRBP2
<b>Target/Specificity</b>	This RBP2 antibody is generated from rabbits immunized with a KLH conjugated synthetic peptide between 56-84 amino acids from the Central region of human RBP2.
<b>Dilution</b>	WB~~1:1000 E~~Use at an assay dependent concentration.
<b>Format</b>	Purified polyclonal antibody supplied in PBS with 0.09% (W/V) sodium azide. This antibody is purified through a protein A column, followed by peptide affinity purification.
<b>Storage</b>	Maintain refrigerated at 2-8°C for up to 2 weeks. For long term storage store at -20°C in small aliquots to prevent freeze-thaw cycles.
<b>Precautions</b>	RBP2 Antibody (Center) is for research use only and not for use in diagnostic or therapeutic procedures.

### Protein Information

---

<b>Name</b>	RBP2
<b>Synonyms</b>	CRBP2
<b>Function</b>	Intracellular transport of retinol.

<b>Cellular Location</b>	Cytoplasm.
<b>Tissue Location</b>	Higher expression in adult small intestine and to a much lesser extent in fetal kidney.

## Background

---

RBP2 is an abundant protein present in the small intestinal epithelium. It is thought to participate in the uptake and/or intracellular metabolism of vitamin A. Vitamin A is a fat-soluble vitamin necessary for growth, reproduction, differentiation of epithelial tissues, and vision. RBP2 may also modulate the supply of retinoic acid to the nuclei of endometrial cells during the menstrual cycle.

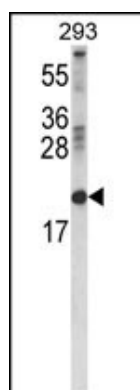
## References

---

- ?Zeng, J., et al. Gastroenterology 138(3):981-992(2010)
- ?Yamaguchi, N., et al. Am. J. Physiol. Gastrointest. Liver Physiol. 296 (3), G524-G533 (2009) :
- ?Tarter, M., et al. Proteins 70(4):1626-1630(2008)
- ?Zhang, L., et al. Am. J. Physiol. Gastrointest. Liver Physiol. 282 (6), G1079-G1087 (2002) :
- ?Folli, C., et al. Proc. Natl. Acad. Sci. U.S.A. 98(7):3710-3715(2001)
- ?Herr, F.M., et al. Biochemistry 31(29):6748-6755(1992)
- ?Astrom, A., et al. J. Biol. Chem. 266(26):17662-17666(1991)

## Images

---



Western blot analysis of RBP2 Antibody (Center) (Cat. #AP9557b) in 293 cell line lysates (35ug/lane). RBP2 (arrow) was detected using the purified Pab.

Please note: All products are 'FOR RESEARCH USE ONLY. NOT FOR USE IN DIAGNOSTIC OR THERAPEUTIC PROCEDURES'.