

SPRR1A Antibody (C-term)

Affinity Purified Rabbit Polyclonal Antibody (Pab)

Catalog # AP9563a

Product Information

Application	WB, E
Primary Accession	P35321
Reactivity	Human
Host	Rabbit
Clonality	Polyclonal
Isotype	Rabbit IgG
Clone Names	RB24229
Calculated MW	9877
Antigen Region	61-89

Additional Information

Gene ID	6698
Other Names	Cornifin-A, 19 kDa pancornulin, SPRK, Small proline-rich protein IA, SPR-IA, SPRR1A
Target/Specificity	This SPRR1A antibody is generated from rabbits immunized with a KLH conjugated synthetic peptide between 61-89 amino acids from the C-terminal region of human SPRR1A.
Dilution	WB~~1:1000 E~~Use at an assay dependent concentration.
Format	Purified polyclonal antibody supplied in PBS with 0.09% (W/V) sodium azide. This antibody is purified through a protein A column, followed by peptide affinity purification.
Storage	Maintain refrigerated at 2-8°C for up to 2 weeks. For long term storage store at -20°C in small aliquots to prevent freeze-thaw cycles.
Precautions	SPRR1A Antibody (C-term) is for research use only and not for use in diagnostic or therapeutic procedures.

Protein Information

Name	SPRR1A
Function	Cross-linked envelope protein of keratinocytes. It is a keratinocyte protein that first appears in the cell cytosol, but ultimately becomes cross-linked to membrane proteins by transglutaminase. All that results in the formation of an insoluble envelope beneath the plasma membrane.

Background

Cross-linked envelope protein of keratinocytes. It is a keratinocyte protein that first appears in the cell cytosol, but ultimately becomes cross-linked to membrane proteins by transglutaminase. All that results in the formation of an insoluble envelope beneath the plasma membrane.

References

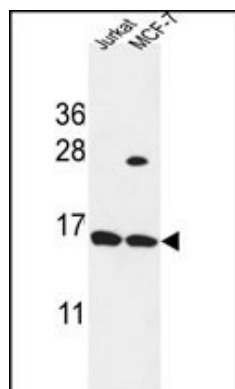
?Jarzab, J., et al. Int. Arch. Allergy Immunol. 151(1):28-37(2010)

?Stemmler, S., et al. Int. J. Immunogenet. 36(4):217-222(2009)

?Kainu, K., et al. Exp. Dermatol. 18(2):109-115(2009)

?Bonilla, I.E., et al. J. Neurosci. 22(4):1303-1315(2002)

Images



SPRR1A Antibody (C-term) (Cat. #AP9563a) western blot analysis in Jurkat, MCF-7 cell line lysates (35ug/lane). This demonstrates the SPRR1A antibody detected the SPRR1A protein (arrow).

Please note: All products are 'FOR RESEARCH USE ONLY. NOT FOR USE IN DIAGNOSTIC OR THERAPEUTIC PROCEDURES'.