

RPL37 Antibody (C-term)

Purified Rabbit Polyclonal Antibody (Pab)

Catalog # AP9565b

Product Information

Application	WB, E
Primary Accession	P61927
Other Accession	P61928 , Q9D823 , P79244
Reactivity	Human
Predicted	Bovine, Mouse, Rat
Host	Rabbit
Clonality	Polyclonal
Isotype	Rabbit IgG
Clone Names	RB24232
Calculated MW	11078
Antigen Region	60-88

Additional Information

Gene ID	6167
Other Names	60S ribosomal protein L37, G116, RPL37
Target/Specificity	This RPL37 antibody is generated from rabbits immunized with a KLH conjugated synthetic peptide between 60-88 amino acids from the C-terminal region of human RPL37.
Dilution	WB~~1:1000 E~~Use at an assay dependent concentration.
Format	Purified polyclonal antibody supplied in PBS with 0.09% (W/V) sodium azide. This antibody is purified through a protein A column, followed by peptide affinity purification.
Storage	Maintain refrigerated at 2-8°C for up to 2 weeks. For long term storage store at -20°C in small aliquots to prevent freeze-thaw cycles.
Precautions	RPL37 Antibody (C-term) is for research use only and not for use in diagnostic or therapeutic procedures.

Protein Information

Name	RPL37
Function	Component of the large ribosomal subunit (PubMed: 23636399 , PubMed: 32669547). The ribosome is a large ribonucleoprotein complex responsible for the synthesis of proteins in the cell (PubMed: 23636399 ,

Cellular Location

Cytoplasm.

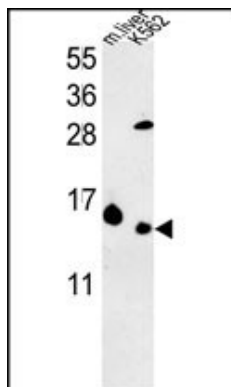
Background

Ribosomes, the organelles that catalyze protein synthesis, consist of a small 40S subunit and a large 60S subunit. Together these subunits are composed of 4 RNA species and approximately 80 structurally distinct proteins. This gene encodes a ribosomal protein that is a component of the 60S subunit. The protein belongs to the L37E family of ribosomal proteins. It is located in the cytoplasm. The protein contains a C2C2-type zinc finger-like motif.

References

- ?Ewing, R.M., et al. Mol. Syst. Biol. 3, 89 (2007) :
?Schwartz, E.I., et al. Mol. Cell. Biol. 24(21):9580-9591(2004)
?Kapp, L.D., et al. Annu. Rev. Biochem. 73, 657-704 (2004) :
?Mazumder, B., et al. Cell 115(2):187-198(2003)
?Yoshihama, M., et al. Genome Res. 12(3):379-390(2002)
?Uechi, T., et al. Genomics 72(3):223-230(2001)
?Kenmochi, N., et al. Genome Res. 8(5):509-523(1998)

Images



RPL37 Antibody (C-term) (Cat. #AP9565b) western blot analysis in K562 cell line and mouse liver tissue lysates (35ug/lane). This demonstrates the RPL37 antibody detected the RPL37 protein (arrow).

Citations

- [Ribosomal proteins RPL37, RPS15 and RPS20 regulate the Mdm2-p53-MdmX network.](#)

Please note: All products are 'FOR RESEARCH USE ONLY. NOT FOR USE IN DIAGNOSTIC OR THERAPEUTIC PROCEDURES'.