

NUPL2 Antibody (N-term)

Affinity Purified Rabbit Polyclonal Antibody (Pab)

Catalog # AP9566c

Product Information

Application	WB, E
Primary Accession	O15504
Reactivity	Human
Host	Rabbit
Clonality	Polyclonal
Isotype	Rabbit IgG
Clone Names	RB24241
Calculated MW	44872
Antigen Region	88-115

Additional Information

Gene ID	11097
Other Names	Nucleoporin-like protein 2, NLP-1, NUP42 homolog, Nucleoporin hCG1, NUPL2, CG1
Target/Specificity	This NUPL2 antibody is generated from rabbits immunized with a KLH conjugated synthetic peptide between 88-115 amino acids from the N-terminal region of human NUPL2.
Dilution	WB~~1:1000 E~~Use at an assay dependent concentration.
Format	Purified polyclonal antibody supplied in PBS with 0.09% (W/V) sodium azide. This antibody is purified through a protein A column, followed by peptide affinity purification.
Storage	Maintain refrigerated at 2-8°C for up to 2 weeks. For long term storage store at -20°C in small aliquots to prevent freeze-thaw cycles.
Precautions	NUPL2 Antibody (N-term) is for research use only and not for use in diagnostic or therapeutic procedures.

Protein Information

Name	NUP42 (HGNC:17010)
Synonyms	CG1, NUPL2
Function	Required for the export of mRNAs containing poly(A) tails from the nucleus into the cytoplasm.

Cellular Location	Nucleus, nuclear pore complex. Nucleus membrane; Peripheral membrane protein; Cytoplasmic side. Note=Excluded from the nucleolus
Tissue Location	Ubiquitously expressed.

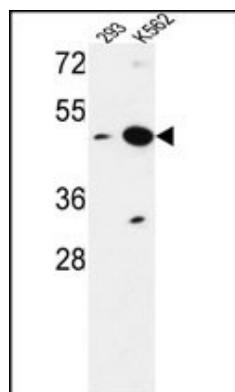
Background

Required for the export of mRNAs containing poly(A) tails from the nucleus into the cytoplasm. In case of infection by HIV-1, it may participate in the docking of viral Vpr at the nuclear envelope.

References

- ?Kendirgi, F., et al. Mol. Biol. Cell 16(9):4304-4315(2005)
- ?Sasaki, M., et al. Genomics 85(5):641-653(2005)
- ?Le Rouzic, E., et al. J. Biol. Chem. 277(47):45091-45098(2002)
- ?de Noronha, C.M., et al. Science 294(5544):1105-1108(2001)

Images



NUPL2 Antibody (N-term) (Cat. #AP9566c) western blot analysis in 293,K562 cell line lysates (35ug/lane).This demonstrates the NUPL2 antibody detected the NUPL2 protein (arrow).

Citations

- [Nesfatin-1 and nesfatin-1-like peptide suppress growth hormone synthesis via the AC/PKA/CREB pathway in mammalian somatotrophs](#)

Please note: All products are 'FOR RESEARCH USE ONLY. NOT FOR USE IN DIAGNOSTIC OR THERAPEUTIC PROCEDURES'.