

CLDN4 Antibody (C-term)

Affinity Purified Rabbit Polyclonal Antibody (Pab)

Catalog # AP9615b

Product Information

Application	WB, E
Primary Accession	O14493
Reactivity	Human, Mouse
Host	Rabbit
Clonality	Polyclonal
Isotype	Rabbit IgG
Clone Names	RB23221
Calculated MW	22077
Antigen Region	171-197

Additional Information

Gene ID	1364
Other Names	Claudin-4, Clostridium perfringens enterotoxin receptor, CPE-R, CPE-receptor, Williams-Beuren syndrome chromosomal region 8 protein, CLDN4, CPER, CPETR1, WBSCR8
Target/Specificity	This CLDN4 antibody is generated from rabbits immunized with a KLH conjugated synthetic peptide between 171-197 amino acids from the C-terminal region of human CLDN4.
Dilution	WB~~1:1000 E~~Use at an assay dependent concentration.
Format	Purified polyclonal antibody supplied in PBS with 0.09% (W/V) sodium azide. This antibody is purified through a protein A column, followed by peptide affinity purification.
Storage	Maintain refrigerated at 2-8°C for up to 2 weeks. For long term storage store at -20°C in small aliquots to prevent freeze-thaw cycles.
Precautions	CLDN4 Antibody (C-term) is for research use only and not for use in diagnostic or therapeutic procedures.

Protein Information

Name	CLDN4 {ECO:0000303 PubMed:35773259, ECO:0000312 HGNC:HGNC:2046}
Function	Can associate with other claudins to regulate tight junction structural and functional strand dynamics (PubMed: 35773259 , PubMed: 36008380). May coassemble with CLDN8 into tight junction strands containing anion-selective

channels that convey paracellular chloride permeability in renal collecting ducts (By similarity) (PubMed:[36008380](#)). May integrate into CLDN3 strands to modulate localized tight junction barrier properties (PubMed:[35773259](#), PubMed:[36008380](#)). May disrupt strand assembly of channel-forming CLDN2 and CLDN15 and inhibit cation conductance (PubMed:[35773259](#), PubMed:[36008380](#)). Cannot form tight junction strands on its own (PubMed:[35773259](#), PubMed:[36008380](#)).

Cellular Location

Cell junction, tight junction. Cell membrane; Multi-pass membrane protein

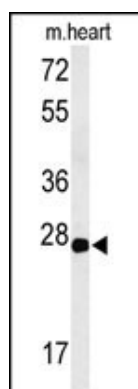
Background

CLDN4 is an integral membrane protein, which belongs to the claudin family. The protein is a component of tight junction strands and may play a role in internal organ development and function during pre- and postnatal life.

References

Papageorgis, P., et al. Cancer Res. 70(3):968-978(2010)
Kimura, J., et al. J. Biol. Chem. 285(1):401-408(2010)
Robertson, S.L., et al. Infect. Immun. 78(1):505-517(2010)
Seckin, Y., et al. Acta Gastroenterol. Belg. 72(4):407-412(2009)

Images



Western blot analysis of CLDN4 Antibody (C-term) (Cat. #AP9615b) in mouse heart tissue lysates (35ug/lane). CLDN4 (arrow) was detected using the purified Pab.

Please note: All products are 'FOR RESEARCH USE ONLY. NOT FOR USE IN DIAGNOSTIC OR THERAPEUTIC PROCEDURES'.