

RPL36 Antibody (N-term)

Affinity Purified Rabbit Polyclonal Antibody (Pab)

Catalog # AP9632a

Product Information

Application	WB, E
Primary Accession	Q9Y3U8
Other Accession	Q66KU4 , P39032 , Q98TF6 , Q3T171 , NP_378669
Reactivity	Human
Predicted	Bovine, Chicken, Rat, Xenopus
Host	Rabbit
Clonality	Polyclonal
Isotype	Rabbit IgG
Clone Names	RB24087
Calculated MW	12254
Antigen Region	14-42

Additional Information

Gene ID	25873
Other Names	60S ribosomal protein L36, RPL36
Target/Specificity	This RPL36 antibody is generated from rabbits immunized with a KLH conjugated synthetic peptide between 14-42 amino acids from the N-terminal region of human RPL36.
Dilution	WB~~1:1000 E~~Use at an assay dependent concentration.
Format	Purified polyclonal antibody supplied in PBS with 0.09% (W/V) sodium azide. This antibody is purified through a protein A column, followed by peptide affinity purification.
Storage	Maintain refrigerated at 2-8°C for up to 2 weeks. For long term storage store at -20°C in small aliquots to prevent freeze-thaw cycles.
Precautions	RPL36 Antibody (N-term) is for research use only and not for use in diagnostic or therapeutic procedures.

Protein Information

Name	RPL36
Function	Component of the large ribosomal subunit (PubMed: 12962325 , PubMed: 23636399 , PubMed: 25901680 , PubMed: 25957688 , PubMed: 32669547). The ribosome is a large ribonucleoprotein complex

responsible for the synthesis of proteins in the cell (PubMed:[12962325](#), PubMed:[23636399](#), PubMed:[25901680](#), PubMed:[25957688](#), PubMed:[32669547](#)).

Cellular Location

Cytoplasm, cytosol. Cytoplasm Note=Detected on cytosolic polysomes (PubMed:25957688) {ECO:0000250|UniProtKB:Q2YGT9, ECO:0000269|PubMed:25957688}

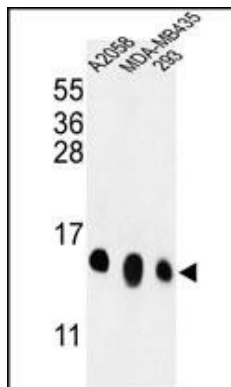
Background

Ribosomes, the organelles that catalyze protein synthesis, consist of a small 40S subunit and a large 60S subunit. Together these subunits are composed of 4 RNA species and approximately 80 structurally distinct proteins. This gene encodes a ribosomal protein that is a component of the 60S subunit. The protein belongs to the L36E family of ribosomal proteins. It is located in the cytoplasm. Transcript variants derived from alternative splicing exist; they encode the same protein. As is typical for genes encoding ribosomal proteins, there are multiple processed pseudogenes of this gene dispersed through the genome. [provided by RefSeq].

References

Gazda, H.T., et al. Am. J. Hum. Genet. 83(6):769-780(2008)
Ewing, R.M., et al. Mol. Syst. Biol. 3, 89 (2007)
Oh, J.H., et al. Mamm. Genome 16(12):942-954(2005)

Images



Western blot analysis of RPL36 Antibody (N-term) (Cat. #AP9632a) in A2058, MDA-MB435, 293 cell line lysates (35ug/lane). RPL36 (arrow) was detected using the purified Pab.

Please note: All products are 'FOR RESEARCH USE ONLY. NOT FOR USE IN DIAGNOSTIC OR THERAPEUTIC PROCEDURES'.