

PDHA1 Antibody

Affinity Purified Rabbit Polyclonal Antibody (Pab)

Catalog # AP9652d

Product Information

Application	WB, E
Primary Accession	P08559
Other Accession	NP_000275.1
Reactivity	Human
Host	Rabbit
Clonality	Polyclonal
Isotype	Rabbit IgG
Clone Names	RB23157
Calculated MW	43296

Additional Information

Gene ID	5160
Other Names	Pyruvate dehydrogenase E1 component subunit alpha, somatic form, mitochondrial, PDHE1-A type I, PDHA1, PHE1A
Target/Specificity	This PDHA1 Antibody is generated from rabbits immunized with recombinant protein of human PDHA1.
Dilution	WB~~1:1000 E~~Use at an assay dependent concentration.
Format	Purified polyclonal antibody supplied in PBS with 0.09% (W/V) sodium azide. This antibody is purified through a protein A column, followed by peptide affinity purification.
Storage	Maintain refrigerated at 2-8°C for up to 2 weeks. For long term storage store at -20°C in small aliquots to prevent freeze-thaw cycles.
Precautions	PDHA1 Antibody is for research use only and not for use in diagnostic or therapeutic procedures.

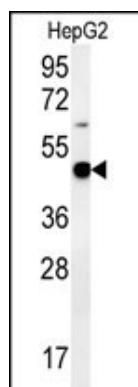
Protein Information

Name	PDHA1
Synonyms	PHE1A
Function	The pyruvate dehydrogenase complex catalyzes the overall conversion of pyruvate to acetyl-CoA and CO(2), and thereby links the glycolytic pathway to the tricarboxylic cycle.

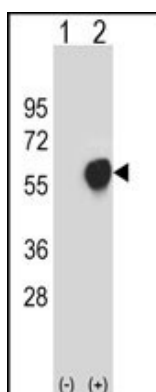
Cellular Location Mitochondrion matrix.

Tissue Location Ubiquitous.

Images



PDHA1 Antibody (Cat. #AP9652d) western blot analysis in HepG2 cell line lysates (35ug/lane). This demonstrates the PDHA1 antibody detected the PDHA1 protein (arrow).



Western blot analysis of PDHA1 (arrow) using rabbit polyclonal PDHA1 Antibody (Cat. #AP9652d). 293 cell lysates (2 ug/lane) either nontransfected (Lane 1) or transiently transfected (Lane 2) with the PDHA1 gene.

Please note: All products are 'FOR RESEARCH USE ONLY. NOT FOR USE IN DIAGNOSTIC OR THERAPEUTIC PROCEDURES'.