

ECHDC1 Antibody (C-term)

Affinity Purified Rabbit Polyclonal Antibody (Pab)
Catalog # AP9659b

Product Information

Application	WB, E
Primary Accession	Q9NTX5
Other Accession	Q6AYG5
Reactivity	Human, Mouse
Predicted	Rat
Host	Rabbit
Clonality	Polyclonal
Isotype	Rabbit IgG
Clone Names	RB24367
Calculated MW	33698
Antigen Region	254-283

Additional Information

Gene ID	55862
Other Names	Ethylmalonyl-CoA decarboxylase, Enoyl-CoA hydratase domain-containing protein 1, Methylmalonyl-CoA decarboxylase, MMCD, ECHDC1
Target/Specificity	This ECHDC1 antibody is generated from rabbits immunized with a KLH conjugated synthetic peptide between 254-283 amino acids from the C-terminal region of human ECHDC1.
Dilution	WB~~1:1000 E~~Use at an assay dependent concentration.
Format	Purified polyclonal antibody supplied in PBS with 0.09% (W/V) sodium azide. This antibody is purified through a protein A column, followed by peptide affinity purification.
Storage	Maintain refrigerated at 2-8°C for up to 2 weeks. For long term storage store at -20°C in small aliquots to prevent freeze-thaw cycles.
Precautions	ECHDC1 Antibody (C-term) is for research use only and not for use in diagnostic or therapeutic procedures.

Protein Information

Name	ECHDC1
Function	Decarboxylates ethylmalonyl-CoA, a potentially toxic metabolite, to form butyryl-CoA, suggesting it might be involved in metabolite proofreading

(PubMed:[22016388](#)). Acts preferentially on (S)- ethylmalonyl-CoA but also has some activity on the (R)-isomer (By similarity). Also has methylmalonyl-CoA decarboxylase activity at lower level (By similarity).

Cellular Location Cytoplasm, cytosol.

Background

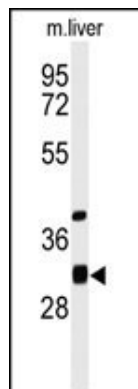
ECHDC1 belongs to the enoyl-CoA hydratase/isomerase family. There are two named isoforms.

References

Zheng, W., et al. Cancer Epidemiol. Biomarkers Prev. 18(10):2761-2764(2009)

Menachem, T.D., et al. Fam. Cancer 8(4):399-402(2009)

Images



Western blot analysis of ECHDC1 Antibody (C-term) (Cat. #AP9659b) in mouse liver tissue lysates (35ug/lane). ECHDC1 (arrow) was detected using the purified Pab.

Please note: All products are 'FOR RESEARCH USE ONLY. NOT FOR USE IN DIAGNOSTIC OR THERAPEUTIC PROCEDURES'.