

GGCT Antibody (C-term)

Affinity Purified Rabbit Polyclonal Antibody (Pab)

Catalog # AP9676b

Product Information

Application	WB, E
Primary Accession	O75223
Reactivity	Human
Host	Rabbit
Clonality	Polyclonal
Isotype	Rabbit IgG
Clone Names	RB24454
Calculated MW	21008
Antigen Region	139-168

Additional Information

Gene ID	79017
Other Names	Gamma-glutamylcyclotransferase, Cytochrome c-releasing factor 21, GGCT, C7orf24, CRF21
Target/Specificity	This GGCT antibody is generated from rabbits immunized with a KLH conjugated synthetic peptide between 139-168 amino acids from the C-terminal region of human GGCT.
Dilution	WB~~1:1000 E~~Use at an assay dependent concentration.
Format	Purified polyclonal antibody supplied in PBS with 0.09% (W/V) sodium azide. This antibody is purified through a protein A column, followed by peptide affinity purification.
Storage	Maintain refrigerated at 2-8°C for up to 2 weeks. For long term storage store at -20°C in small aliquots to prevent freeze-thaw cycles.
Precautions	GGCT Antibody (C-term) is for research use only and not for use in diagnostic or therapeutic procedures.

Protein Information

Name	GGCT (HGNC:21705)
Synonyms	C7orf24, CRF21
Function	Catalyzes the formation of 5-oxoproline from gamma-glutamyl dipeptides and may play a significant role in glutathione homeostasis

(PubMed:[18515354](#)). Induces release of cytochrome c from mitochondria with resultant induction of apoptosis (PubMed:[16765912](#)).

Background

GGCT (EC 2.3.2.4) catalyzes the formation of 5-oxoproline (pyroglutamic acid) from gamma-glutamyl dipeptides and may play a significant role in glutathione homeostasis.

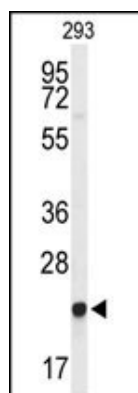
References

Oakley, A.J., et al. J. Biol. Chem. 283(32):22031-22042(2008)

Bae, E., et al. Proteins 70(2):588-591(2008)

Masuda, Y., et al. Biochem. Biophys. Res. Commun. 346(2):454-460(2006)

Images



Western blot analysis of GGCT Antibody (C-term) (Cat. #AP9676b) in 293 cell line lysates (35ug/lane). GGCT (arrow) was detected using the purified Pab.

Please note: All products are 'FOR RESEARCH USE ONLY. NOT FOR USE IN DIAGNOSTIC OR THERAPEUTIC PROCEDURES'.