

HFE2 Antibody (Center)

Affinity Purified Rabbit Polyclonal Antibody (Pab)

Catalog # AP9699c

Product Information

Application	IHC-P, WB, E
Primary Accession	Q6ZVN8
Reactivity	Human, Rat, Mouse
Host	Rabbit
Clonality	Polyclonal
Isotype	Rabbit IgG
Clone Names	RB22184
Calculated MW	45080
Antigen Region	134-162

Additional Information

Gene ID	148738
Other Names	Hemojuvelin, Hemochromatosis type 2 protein, RGM domain family member C, HFE2, HJV, RGMC
Target/Specificity	This HFE2 antibody is generated from rabbits immunized with a KLH conjugated synthetic peptide between 134-162 amino acids from the Central region of human HFE2.
Dilution	IHC-P~~1:100~500 WB~~1:1000 E~~Use at an assay dependent concentration.
Format	Purified polyclonal antibody supplied in PBS with 0.09% (W/V) sodium azide. This antibody is purified through a protein A column, followed by peptide affinity purification.
Storage	Maintain refrigerated at 2-8°C for up to 2 weeks. For long term storage store at -20°C in small aliquots to prevent freeze-thaw cycles.
Precautions	HFE2 Antibody (Center) is for research use only and not for use in diagnostic or therapeutic procedures.

Protein Information

Name	HJV (HGNC:4887)
Synonyms	HFE2, RGMC
Function	Acts as a bone morphogenetic protein (BMP) coreceptor (PubMed: 18976966). Through enhancement of BMP signaling regulates

hepcidin (HAMP) expression and regulates iron homeostasis (PubMed:[18976966](#)).

Cellular Location

Cell membrane; Lipid-anchor, GPI- anchor. Note=Also released in the extracellular space

Tissue Location

Adult and fetal liver, heart, and skeletal muscle.

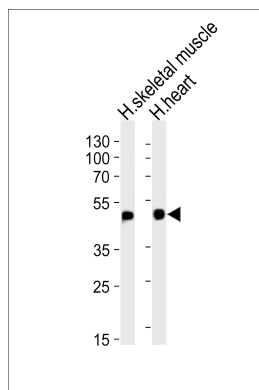
Background

HFE2 is involved in iron metabolism. It may be a component of the signaling pathway which activates hepcidin or it may act as a modulator of hepcidin expression. It could also represent the cellular receptor for hepcidin.

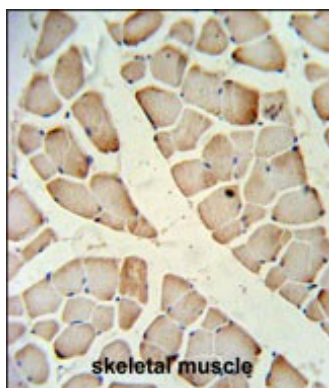
References

Zhu, X., et al. Genet. Epidemiol. 34(2):171-187(2010)
Barton, J.C., et al. Am. J. Hematol. 84(11):710-714(2009)
Zhang, A.S., et al. J. Biol. Chem. 284(34):22580-22589(2009)

Images



Western blot analysis of lysates from human skeletal muscle and heart tissue lysates (from left to right), using HFE2 Antibody (Center)(Cat. #AP9699c). AP9699c was diluted at 1:1000 at each lane. A goat anti-rabbit IgG H&L(HRP) at 1:5000 dilution was used as the secondary antibody. Lysates at 35ug per lane.



HFE2 Antibody (Center) (Cat. #AP9699c) IHC analysis in formalin fixed and paraffin embedded skeletal muscle followed by peroxidase conjugation of the secondary antibody and DAB staining. This data demonstrates the use of the HFE2 Antibody (Center) for immunohistochemistry. Clinical relevance has not been evaluated.

Please note: All products are 'FOR RESEARCH USE ONLY. NOT FOR USE IN DIAGNOSTIC OR THERAPEUTIC PROCEDURES'.