

ABHEB Antibody (C-term)

Affinity Purified Rabbit Polyclonal Antibody (Pab)

Catalog # AP9700b

Product Information

Application	WB, IHC-P, FC, E
Primary Accession	Q96IU4
Other Accession	A7YY28
Reactivity	Human
Predicted	Bovine
Host	Rabbit
Clonality	Polyclonal
Isotype	Rabbit IgG
Clone Names	RB22194
Calculated MW	22346
Antigen Region	150-179

Additional Information

Gene ID	84836
Other Names	Alpha/beta hydrolase domain-containing protein 14B, Abhydrolase domain-containing protein 14B, 3---, CCG1-interacting factor B, ABHD14B, CIB
Target/Specificity	This ABHEB antibody is generated from rabbits immunized with a KLH conjugated synthetic peptide between 150-179 amino acids from the C-terminal region of human ABHEB.
Dilution	WB~~1:1000 IHC-P~~1:100~500 FC~~1:10~50 E~~Use at an assay dependent concentration.
Format	Purified polyclonal antibody supplied in PBS with 0.09% (W/V) sodium azide. This antibody is purified through a protein A column, followed by peptide affinity purification.
Storage	Maintain refrigerated at 2-8°C for up to 2 weeks. For long term storage store at -20°C in small aliquots to prevent freeze-thaw cycles.
Precautions	ABHEB Antibody (C-term) is for research use only and not for use in diagnostic or therapeutic procedures.

Protein Information

Name	ABHD14B {ECO:0000303 PubMed:31478652, ECO:0000312 HGNC:HGNC:28235}
------	--

Function	Acts as an atypical protein-lysine deacetylase in vitro (PubMed: 31478652). Catalyzes the deacetylation of lysine residues using CoA as substrate, generating acetyl-CoA and the free amine of protein- lysine residues (PubMed: 31478652). Additional experiments are however required to confirm the protein-lysine deacetylase activity in vivo (Probable). Has hydrolase activity towards various surrogate p- nitrophenyl (pNp) substrates, such as pNp-butyrate, pNp-acetate and pNp-octanoate in vitro, with a strong preference for pNp-acetate (PubMed: 14672934 , PubMed: 31478652). May activate transcription (PubMed: 14672934).
Cellular Location	Cytoplasm. Nucleus. Note=Predominantly cytoplasmic
Tissue Location	Ubiquitous (PubMed:14672934). Detected in spleen, thymus, prostate, testis, ovary, small intestine, colon, peripheral blood leukocyte, heart, placenta, lung, liver, skeletal muscle, pancreas and kidney (PubMed:14672934).

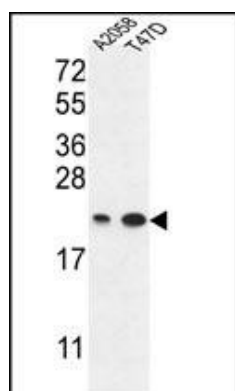
Background

ABHEB has hydrolase activity towards p-nitrophenyl butyrate (in vitro). It may activate transcription.

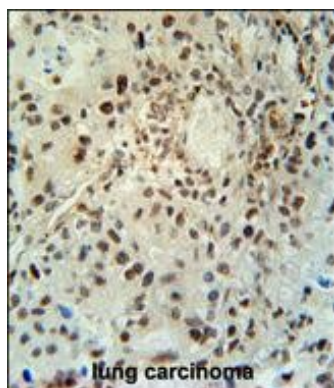
References

Padmanabhan, B., et al. Acta Crystallogr. D Biol. Crystallogr. 56 (PT 11), 1479-1481 (2000)

Images

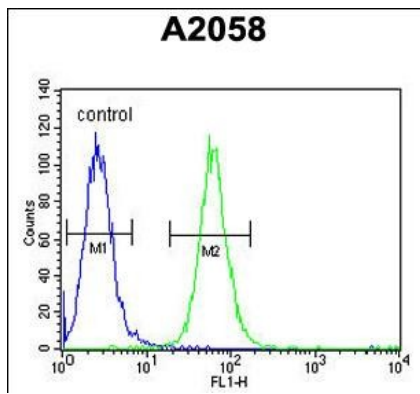


ABHEB Antibody (C-term) (Cat. #AP9700b) western blot analysis in A2058,T47D cell line lysates (35ug/lane).This demonstrates the ABHEB antibody detected the ABHEB protein (arrow).



ABHEB Antibody (C-term) (Cat. #AP9700b) immunohistochemistry analysis in formalin fixed and paraffin embedded human lung carcinoma followed by peroxidase conjugation of the secondary antibody and DAB staining. This data demonstrates the use of the ABHEB Antibody (C-term) for immunohistochemistry. Clinical relevance has not been evaluated.

ABHEB Antibody (C-term) (Cat. #AP9700b) flow cytometric analysis of A2058 cells (right histogram) compared to a negative control cell (left histogram).FITC-conjugated goat-anti-rabbit secondary antibodies were used for the analysis.



Please note: All products are 'FOR RESEARCH USE ONLY. NOT FOR USE IN DIAGNOSTIC OR THERAPEUTIC PROCEDURES'.