

INSC Antibody (Center)

Affinity Purified Rabbit Polyclonal Antibody (Pab)

Catalog # AP9702c

Product Information

| | |
|--------------------------|------------------------|
| Application | WB, IHC-P, E |
| Primary Accession | Q1MX18 |
| Other Accession | Q3HNM7 |
| Reactivity | Human |
| Predicted | Mouse |
| Host | Rabbit |
| Clonality | Polyclonal |
| Isotype | Rabbit IgG |
| Clone Names | RB22206 |
| Calculated MW | 63469 |
| Antigen Region | 410-437 |

Additional Information

| | |
|---------------------------|--|
| Gene ID | 387755 |
| Other Names | Protein inscuteable homolog, INSC |
| Target/Specificity | This INSC antibody is generated from rabbits immunized with a KLH conjugated synthetic peptide between 410-437 amino acids from the Central region of human INSC. |
| Dilution | WB~~1:1000 IHC-P~~1:100~500 E~~Use at an assay dependent concentration. |
| Format | Purified polyclonal antibody supplied in PBS with 0.09% (W/V) sodium azide. This antibody is purified through a protein A column, followed by peptide affinity purification. |
| Storage | Maintain refrigerated at 2-8°C for up to 2 weeks. For long term storage store at -20°C in small aliquots to prevent freeze-thaw cycles. |
| Precautions | INSC Antibody (Center) is for research use only and not for use in diagnostic or therapeutic procedures. |

Protein Information

| | |
|-----------------|---|
| Name | INSC |
| Function | May function as an adapter linking the Par3 complex to the GPSM1/GPSM2 complex (PubMed: 16458856). Involved in spindle orientation during mitosis. May regulate cell proliferation and differentiation in the developing nervous |

system. May play a role in the asymmetric division of fibroblasts and participate in the process of stratification of the squamous epithelium (By similarity).

Cellular Location

Cytoplasm. Cytoplasm, cell cortex. Note=Uniformly distributed in the cytoplasm during interphase. During metaphase, detected in the cell cortex, adjacent to the mitotic spindle poles

Tissue Location

Isoform 1 is expressed in various tissues with stronger expression in liver, kidney and small intestine. Isoform 2 is abundantly expressed in small intestine and to a lower extent in lung and pancreas.

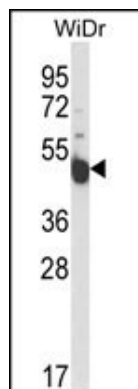
Background

In *Drosophila*, neuroblasts divide asymmetrically into another neuroblast at the apical side and a smaller ganglion mother cell on the basal side. Cell polarization is precisely regulated by 2 apically localized multiprotein signaling complexes that are tethered by Inscuteable, which regulates their apical localization (Izaki et al., 2006 [PubMed 16458856]).

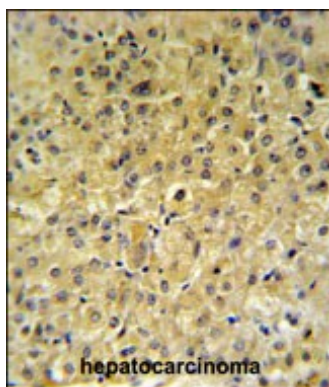
References

Vural, A., et al. Mol. Cell. Biol. 30(6):1528-1540(2010)
Rivadeneira, F., et al. Nat. Genet. 41(11):1199-1206(2009)
Izaki, T., et al. Biochem. Biophys. Res. Commun. 341(4):1001-1006(2006)
Katoh, M., et al. Int. J. Mol. Med. 11(1):111-116(2003)

Images



Western blot analysis of INSC Antibody (Center) (Cat. #AP9702c) in WiDr cell line lysates (35ug/lane). INSC (arrow) was detected using the purified Pab.



INSC Antibody (Center) (Cat. #AP9702c) IHC analysis in formalin fixed and paraffin embedded hepatocarcinoma followed by peroxidase conjugation of the secondary antibody and DAB staining. This data demonstrates the use of the INSC Antibody (Center) for immunohistochemistry. Clinical relevance has not been evaluated.