

CLDND1 Antibody (Center)

Affinity Purified Rabbit Polyclonal Antibody (Pab)

Catalog # AP9729c

Product Information

| | |
|-------------------|------------------------|
| Application | WB, E |
| Primary Accession | Q9NY35 |
| Other Accession | Q4R4Z3 |
| Reactivity | Human, Mouse |
| Predicted | Monkey |
| Host | Rabbit |
| Clonality | Polyclonal |
| Isotype | Rabbit IgG |
| Clone Names | RB24359 |
| Calculated MW | 28603 |
| Antigen Region | 43-72 |

Additional Information

| | |
|--------------------|--|
| Gene ID | 56650 |
| Other Names | Claudin domain-containing protein 1, Membrane protein GENX-3745, CLDND1, C3orf4 |
| Target/Specificity | This CLDND1 antibody is generated from rabbits immunized with a KLH conjugated synthetic peptide between 43-72 amino acids from the Central region of human CLDND1. |
| Dilution | WB~~1:1000 E~~Use at an assay dependent concentration. |
| Format | Purified polyclonal antibody supplied in PBS with 0.09% (W/V) sodium azide. This antibody is purified through a protein A column, followed by peptide affinity purification. |
| Storage | Maintain refrigerated at 2-8°C for up to 2 weeks. For long term storage store at -20°C in small aliquots to prevent freeze-thaw cycles. |
| Precautions | CLDND1 Antibody (Center) is for research use only and not for use in diagnostic or therapeutic procedures. |

Protein Information

| | |
|----------|--------|
| Name | CLDND1 |
| Synonyms | C3orf4 |

| | |
|--------------------------|--|
| Function | Plays a role in negatively regulating the permeability of cells to small molecules. |
| Cellular Location | Cell junction, tight junction. Cell membrane; Multi-pass membrane protein |
| Tissue Location | Widely distributed in the adult CNS with highest expression in the corpus callosum, caudate nucleus, cerebral cortex, medulla, putamen, spinal cord, substantia nigra and subthalamic nucleus. Weak expression was detected in the adult heart |

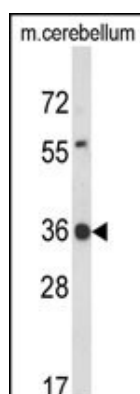
Background

CLDND1 is widely distributed in the adult CNS with highest expression in the corpus callosum, caudate nucleus, cerebral cortex, medulla, putamen, spinal cord, substantia nigra and subthalamic nucleus. Weak expression has been detected in the adult heart. There are 2 named isoforms produced by alternative splicing.

References

Liu, Y., et al. Lung Cancer 56(3):307-317(2007)
Fayein, N.A., et al. Gene 289 (1-2), 119-129 (2002)

Images



Western blot analysis of CLDND1 Antibody (Center) (Cat. #AP9729c) in mouse cerebellum tissue lysates (35ug/lane). CLDND1 (arrow) was detected using the purified Pab.

Please note: All products are 'FOR RESEARCH USE ONLY. NOT FOR USE IN DIAGNOSTIC OR THERAPEUTIC PROCEDURES'.