

MAPK1IP1L Antibody (Center)

Affinity Purified Rabbit Polyclonal Antibody (Pab)

Catalog # AP9730c

Product Information

Application	IHC-P, WB, E
Primary Accession	Q8NDC0
Other Accession	Q4R837 , Q5E9L3
Reactivity	Human
Predicted	Bovine, Monkey
Host	Rabbit
Clonality	Polyclonal
Isotype	Rabbit IgG
Clone Names	RB24363
Calculated MW	24269
Antigen Region	108-137

Additional Information

Gene ID	93487
Other Names	MAPK-interacting and spindle-stabilizing protein-like, Mitogen-activated protein kinase 1-interacting protein 1-like, MAPK1IP1L, C14orf32
Target/Specificity	This MAPK1IP1L antibody is generated from rabbits immunized with a KLH conjugated synthetic peptide between 108-137 amino acids from the Central region of human MAPK1IP1L.
Dilution	IHC-P~~1:100~500 WB~~1:1000 E~~Use at an assay dependent concentration.
Format	Purified polyclonal antibody supplied in PBS with 0.09% (W/V) sodium azide. This antibody is purified through a protein A column, followed by peptide affinity purification.
Storage	Maintain refrigerated at 2-8°C for up to 2 weeks. For long term storage store at -20°C in small aliquots to prevent freeze-thaw cycles.
Precautions	MAPK1IP1L Antibody (Center) is for research use only and not for use in diagnostic or therapeutic procedures.

Protein Information

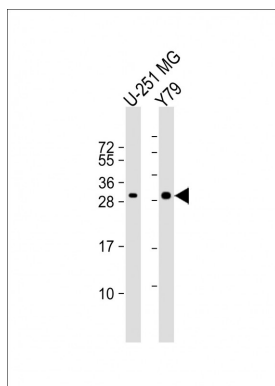
Name	MAPK1IP1L
Synonyms	C14orf32

References

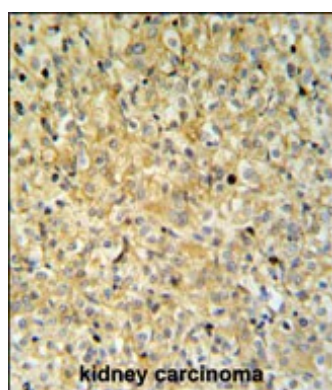
?Olsen, J.V., et al. Cell 127(3):635-648(2006)

?Heilig, R., et al. Nature 421(6923):601-607(2003)

Images



All lanes : Anti-MAPK1IP1L Antibody (Center) at 1:1000 dilution Lane 1: U-251 MG whole cell lysate Lane 2: Y79 whole cell lysate Lysates/proteins at 20 µg per lane. Secondary Goat Anti-Rabbit IgG, (H+L), Peroxidase conjugated at 1/10000 dilution. Predicted band size : 24 kDa Blocking/Dilution buffer: 5% NFDM/TBST.



MAPK1IP1L Antibody (Center) (Cat. #AP9730c) IHC analysis in formalin fixed and paraffin embedded kidney carcinoma followed by peroxidase conjugation of the secondary antibody and DAB staining. This data demonstrates the use of the MAPK1IP1L Antibody (Center) for immunohistochemistry. Clinical relevance has not been evaluated.

Please note: All products are 'FOR RESEARCH USE ONLY. NOT FOR USE IN DIAGNOSTIC OR THERAPEUTIC PROCEDURES'.