

## CA6 Antibody (C-term)

Affinity Purified Rabbit Polyclonal Antibody (Pab)

Catalog # AP9780b

### Product Information

---

<b>Application</b>	WB, IHC-P, FC, E
<b>Primary Accession</b>	<a href="#">P23280</a>
<b>Reactivity</b>	Human
<b>Host</b>	Rabbit
<b>Clonality</b>	Polyclonal
<b>Isotype</b>	Rabbit IgG
<b>Clone Names</b>	RB24585
<b>Calculated MW</b>	35367
<b>Antigen Region</b>	279-308

### Additional Information

---

<b>Gene ID</b>	765
<b>Other Names</b>	Carbonic anhydrase 6, Carbonate dehydratase VI, Carbonic anhydrase VI, CA-VI, Salivary carbonic anhydrase, Secreted carbonic anhydrase, CA6
<b>Target/Specificity</b>	This CA6 antibody is generated from rabbits immunized with a KLH conjugated synthetic peptide between 279-308 amino acids from the C-terminal region of human CA6.
<b>Dilution</b>	WB~~1:1000 IHC-P~~1:100~500 FC~~1:10~50 E~~Use at an assay dependent concentration.
<b>Format</b>	Purified polyclonal antibody supplied in PBS with 0.09% (W/V) sodium azide. This antibody is purified through a protein A column, followed by peptide affinity purification.
<b>Storage</b>	Maintain refrigerated at 2-8°C for up to 2 weeks. For long term storage store at -20°C in small aliquots to prevent freeze-thaw cycles.
<b>Precautions</b>	CA6 Antibody (C-term) is for research use only and not for use in diagnostic or therapeutic procedures.

### Protein Information

---

<b>Name</b>	CA6
<b>Function</b>	Reversible hydration of carbon dioxide. Its role in saliva is unknown.
<b>Cellular Location</b>	Secreted.

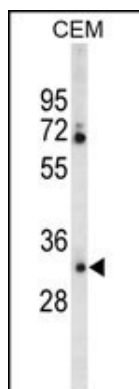
## Background

The protein encoded by this gene is one of several isozymes of carbonic anhydrase. This protein is found only in salivary glands and saliva and protein may play a role in the reversible hydration of carbon dioxide though its function in saliva is unknown.

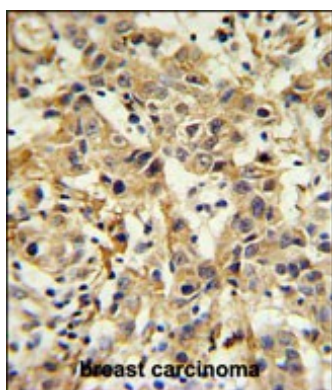
## References

- Nishimori, I., et al. Bioorg. Med. Chem. 15(15):5351-5357(2007)  
Karhumaa, P., et al. Proc. Natl. Acad. Sci. U.S.A. 98(20):11604-11608(2001)  
Breton, S. JOP 2 (4 SUPPL), 159-164 (2001) :  
Leinonen, J., et al. J. Histochem. Cytochem. 49(5):657-662(2001)

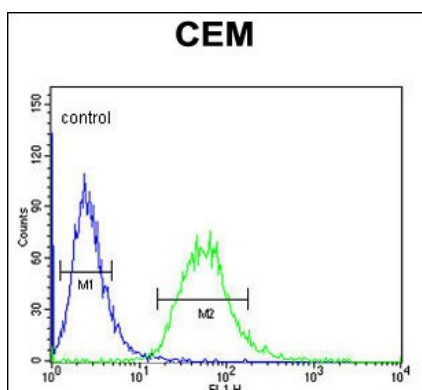
## Images



Western blot analysis of CA6 Antibody (C-term) (Cat. #AP9780b) in CEM cell line lysates (35ug/lane). CA6 (arrow) was detected using the purified Pab.



CA6 Antibody (C-term) (Cat. #AP9780b) IHC analysis in formalin fixed and paraffin embedded breast carcinoma followed by peroxidase conjugation of the secondary antibody and DAB staining. This data demonstrates the use of the CA6 Antibody (C-term) for immunohistochemistry. Clinical relevance has not been evaluated.



CA6 Antibody (C-term) (Cat. #AP9780b) flow cytometric analysis of CEM cells (right histogram) compared to a negative control cell (left histogram). FITC-conjugated goat-anti-rabbit secondary antibodies were used for the analysis.

Please note: All products are 'FOR RESEARCH USE ONLY. NOT FOR USE IN DIAGNOSTIC OR THERAPEUTIC PROCEDURES'.