

## GNRH2 Antibody (Center)

Affinity Purified Rabbit Polyclonal Antibody (Pab)

Catalog # AP9784c

### Product Information

---

Application	WB, FC, E
Primary Accession	<a href="#">O43555</a>
Reactivity	Human
Host	Rabbit
Clonality	Polyclonal
Isotype	Rabbit IgG
Clone Names	RB24624
Calculated MW	12918
Antigen Region	26-53

### Additional Information

---

Gene ID	2797
Other Names	Progonadoliberin-2, Progonadoliberin II, Gonadoliberin-2, Gonadoliberin II, Gonadotropin-releasing hormone II, GnRH II, Luliberin II, Luteinizing hormone-releasing hormone II, LH-RH II, GnRH-associated peptide 2, GnRH-associated peptide II, GNRH2
Target/Specificity	This GNRH2 antibody is generated from rabbits immunized with a KLH conjugated synthetic peptide between 26-53 amino acids from the Central region of human GNRH2.
Dilution	WB~~1:1000 FC~~1:10~50 E~~Use at an assay dependent concentration.
Format	Purified polyclonal antibody supplied in PBS with 0.09% (W/V) sodium azide. This antibody is purified through a protein A column, followed by peptide affinity purification.
Storage	Maintain refrigerated at 2-8°C for up to 2 weeks. For long term storage store at -20°C in small aliquots to prevent freeze-thaw cycles.
Precautions	GNRH2 Antibody (Center) is for research use only and not for use in diagnostic or therapeutic procedures.

### Protein Information

---

Name	GNRH2
Function	Stimulates the secretion of gonadotropins; it stimulates the secretion of both luteinizing and follicle-stimulating hormones.

**Cellular Location**

Secreted.

**Tissue Location**

Midbrain; expressed at significantly higher levels outside the brain (up to 30-fold), particularly in the kidney, bone marrow and prostate

## Background

---

The protein encoded by this gene is a preproprotein that is cleaved to form a secreted 10 aa peptide hormone. The secreted decapeptide regulates reproduction in females by stimulating the secretion of both luteinizing- and follicle-stimulating hormones.

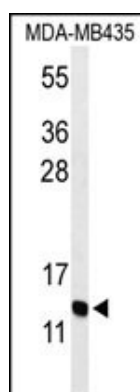
## References

---

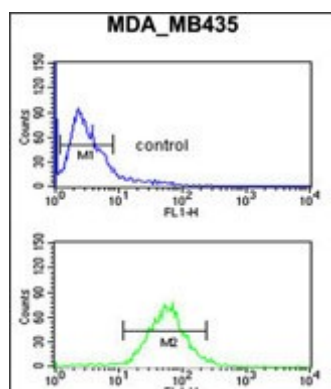
Yerges, L.M., et al. J. Bone Miner. Res. 24(12):2039-2049(2009)  
Poon, S.L., et al. Mol. Endocrinol. 23(10):1646-1656(2009)  
Gratacos, M., et al. Am. J. Med. Genet. B Neuropsychiatr. Genet. 150B (6), 808-816 (2009)  
Palmieri, R.T., et al. Cancer Epidemiol. Biomarkers Prev. 17(12):3567-3572(2008)  
Poon, S.L., et al. Endocrinology 149(10):5162-5171(2008)

## Images

---



Western blot analysis of GNRH2 Antibody (Center) (Cat. #AP9784c) in MDA-MB435 cell line lysates (35ug/lane). GNRH2 (arrow) was detected using the purified Pab.



GNRH2 Antibody (Center) (Cat. #AP9784c) flow cytometric analysis of MDA-MB435 cells (bottom histogram) compared to a negative control cell (top histogram). FITC-conjugated goat-anti-rabbit secondary antibodies were used for the analysis.

Please note: All products are 'FOR RESEARCH USE ONLY. NOT FOR USE IN DIAGNOSTIC OR THERAPEUTIC PROCEDURES'.