

GPR180 Antibody (Center)

Affinity Purified Rabbit Polyclonal Antibody (Pab)

Catalog # AP9787c

Product Information

Application	WB, IHC-P, E
Primary Accession	Q86V85
Reactivity	Human
Host	Rabbit
Clonality	Polyclonal
Isotype	Rabbit IgG
Clone Names	RB24629
Calculated MW	49395
Antigen Region	119-147

Additional Information

Gene ID	160897
Other Names	Integral membrane protein GPR180, Intimal thickness-related receptor, GPR180, ITR
Target/Specificity	This GPR180 antibody is generated from rabbits immunized with a KLH conjugated synthetic peptide between 119-147 amino acids from the Central region of human GPR180.
Dilution	WB~~1:1000 IHC-P~~1:100~500 E~~Use at an assay dependent concentration.
Format	Purified polyclonal antibody supplied in PBS with 0.09% (W/V) sodium azide. This antibody is purified through a protein A column, followed by peptide affinity purification.
Storage	Maintain refrigerated at 2-8°C for up to 2 weeks. For long term storage store at -20°C in small aliquots to prevent freeze-thaw cycles.
Precautions	GPR180 Antibody (Center) is for research use only and not for use in diagnostic or therapeutic procedures.

Protein Information

Name	GPR180
Synonyms	ITR
Cellular Location	Membrane; Multi-pass membrane protein

Background

This gene encodes a protein that is a member of the G protein-coupled receptor superfamily. This protein is produced predominantly in vascular smooth muscle cells and may play an important role in the regulation of vascular remodeling.

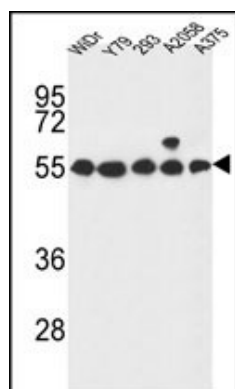
References

Dunham, A., et al. Nature 428(6982):522-528(2004)

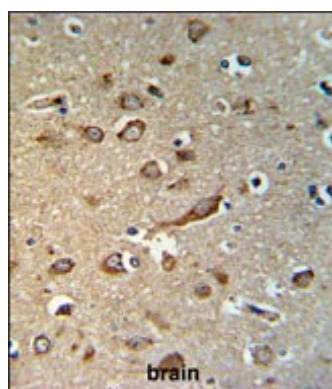
Tsukada, S., et al. Circulation 107(2):313-319(2003)

Iida, A., et al. J. Hum. Genet. 48(4):170-172(2003)

Images



GPR180 Antibody (Center) (Cat. #AP9787c) western blot analysis in WiDr,Y79,293,A2058,A375 cell line lysates (35ug/lane).This demonstrates the GPR180 antibody detected the GPR180 protein (arrow).



GPR180 Antibody (Center) (Cat. #AP9787c) IHC analysis in formalin fixed and paraffin embedded brain tissue followed by peroxidase conjugation of the secondary antibody and DAB staining. This data demonstrates the use of the GPR180 Antibody (Center) for immunohistochemistry. Clinical relevance has not been evaluated.

Please note: All products are 'FOR RESEARCH USE ONLY. NOT FOR USE IN DIAGNOSTIC OR THERAPEUTIC PROCEDURES'.