

HAPLN1 Antibody (N-term)

Affinity Purified Rabbit Polyclonal Antibody (Pab)

Catalog # AP9791A

Product Information

Application	WB, IHC-P, FC, E
Primary Accession	P10915
Reactivity	Human, Mouse
Host	Rabbit
Clonality	Polyclonal
Isotype	Rabbit IgG
Clone Names	RB24639
Calculated MW	40166
Antigen Region	10-38

Additional Information

Gene ID	1404
Other Names	Hyaluronan and proteoglycan link protein 1, Cartilage-linking protein 1, Cartilage-link protein, Proteoglycan link protein, HAPLN1, CRTL1
Target/Specificity	This HAPLN1 antibody is generated from rabbits immunized with a KLH conjugated synthetic peptide between 10-38 amino acids from the N-terminal region of human HAPLN1.
Dilution	WB~~1:1000 IHC-P~~1:100~500 FC~~1:10~50 E~~Use at an assay dependent concentration.
Format	Purified polyclonal antibody supplied in PBS with 0.09% (W/V) sodium azide. This antibody is purified through a protein A column, followed by peptide affinity purification.
Storage	Maintain refrigerated at 2-8°C for up to 2 weeks. For long term storage store at -20°C in small aliquots to prevent freeze-thaw cycles.
Precautions	HAPLN1 Antibody (N-term) is for research use only and not for use in diagnostic or therapeutic procedures.

Protein Information

Name	HAPLN1
Synonyms	CRTL1
Function	Stabilizes the aggregates of proteoglycan monomers with hyaluronic acid in

the extracellular cartilage matrix.

Cellular Location

Secreted, extracellular space, extracellular matrix

Tissue Location

Widely expressed. Weakly expressed in the brain.

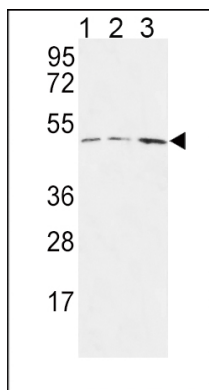
Background

HAPLN1 belongs to the HAPLN family. It contains 1 Ig like V type (immunoglobulin like) domain and 2 Link domains. This protein stabilizes the aggregates of proteoglycan monomers with hyaluronic acid in the extracellular cartilage matrix.

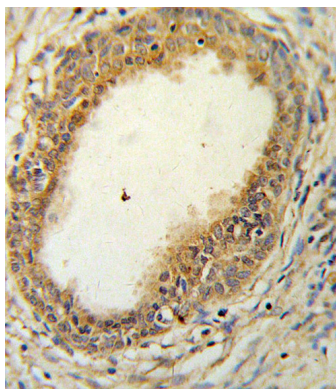
References

Wheeler, H.E., et al. PLoS Genet. 5 (10), E1000685 (2009)
Cenit, M.D., et al. Mult. Scler. 15(8):913-917(2009)
Ivanova, A.V., et al. Clin. Cancer Res. 15(8):2602-2611(2009)
Murabito, J.M., et al. BMC Med. Genet. 8 SUPPL 1, S6 (2007)
Seyfried, N.T., et al. J. Biol. Chem. 280(7):5435-5448(2005)

Images

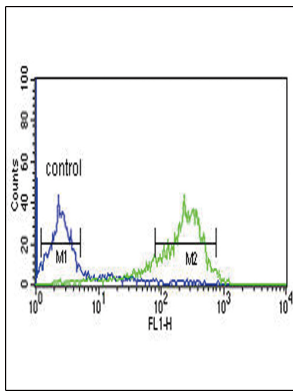


HAPLN1 Antibody (N-term) (Cat. #AP9791a) western blot analysis in MCF-7(lane 1),Jurkat(lane 2),HepG2(lane 3) cell line lysates (35ug/lane).This demonstrates the HAPLN1 antibody detected the HAPLN1 protein (arrow).



HAPLN1 Antibody (N-term) (Cat. #AP9791a) IHC analysis in formalin fixed and paraffin embedded prostate carcinoma followed by peroxidase conjugation of the secondary antibody and DAB staining. This data demonstrates the use of the HAPLN1 Antibody (N-term)for immunohistochemistry. Clinical relevance has not been evaluated.

HAPLN1 Antibody (N-term) (Cat. #AP9791a) flow cytometric analysis of MCF-7 cells (right histogram) compared to a negative control cell (left histogram).FITC-conjugated goat-anti-rabbit secondary antibodies were used for the analysis.



Citations

- [Biomarker Signatures of Quality for Engineering Nasal Chondrocyte-Derived Cartilage](#)
- [Acquisition of useful sero-diagnostic autoantibodies using the same patients\' sera and tumor tissues.](#)

Please note: All products are 'FOR RESEARCH USE ONLY. NOT FOR USE IN DIAGNOSTIC OR THERAPEUTIC PROCEDURES'.