

# RHG19 Antibody (Center)

Affinity Purified Rabbit Polyclonal Antibody (Pab)

Catalog # AP9811c

## Product Information

---

<b>Application</b>	WB, FC, E
<b>Primary Accession</b>	<a href="#">Q14CB8</a>
<b>Reactivity</b>	Human
<b>Host</b>	Rabbit
<b>Clonality</b>	Polyclonal
<b>Isotype</b>	Rabbit IgG
<b>Clone Names</b>	RB25474
<b>Calculated MW</b>	55756
<b>Antigen Region</b>	195-224

## Additional Information

---

<b>Gene ID</b>	84986
<b>Other Names</b>	Rho GTPase-activating protein 19, Rho-type GTPase-activating protein 19, ARHGAP19
<b>Target/Specificity</b>	This RHG19 antibody is generated from rabbits immunized with a KLH conjugated synthetic peptide between 195-224 amino acids from the Central region of human RHG19.
<b>Dilution</b>	WB~~1:1000 FC~~1:10~50 E~~Use at an assay dependent concentration.
<b>Format</b>	Purified polyclonal antibody supplied in PBS with 0.09% (W/V) sodium azide. This antibody is purified through a protein A column, followed by peptide affinity purification.
<b>Storage</b>	Maintain refrigerated at 2-8°C for up to 2 weeks. For long term storage store at -20°C in small aliquots to prevent freeze-thaw cycles.
<b>Precautions</b>	RHG19 Antibody (Center) is for research use only and not for use in diagnostic or therapeutic procedures.

## Protein Information

---

<b>Name</b>	ARHGAP19
<b>Function</b>	GTPase activator for the Rho-type GTPases by converting them to an inactive GDP-bound state.
<b>Cellular Location</b>	Nucleus.

## Tissue Location

Strong expression in fetal heart, brain, placenta, lung, liver, skeletal muscle, kidney and pancreas. Weak expression in adult pancreas, spleen, thymus, and ovary

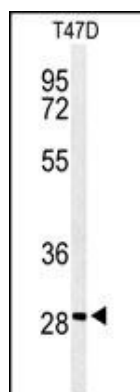
## Background

Members of the ARHGAP family, such as ARHGAP19, encode negative regulators of Rho GTPases (see RHOA; MIM 165390), which are involved in cell migration, proliferation, and differentiation, actin remodeling, and G1 cell cycle progression.

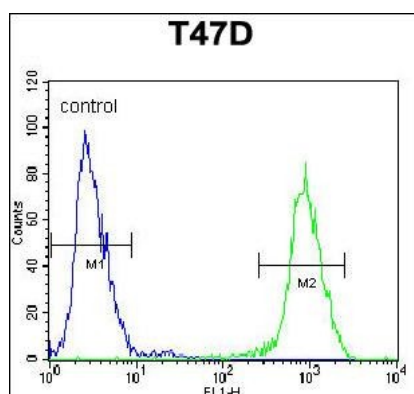
## References

Lv, L., et al. DNA Seq. 18(3):184-189(2007)  
Grupe, A., et al. Am. J. Hum. Genet. 78(1):78-88(2006)  
Deloukas, P., et al. Nature 429(6990):375-381(2004)  
Jikuya, H., et al. DNA Res. 10(1):49-57(2003)

## Images



Western blot analysis of RHG19 Antibody (Center) (Cat. #AP9811c) in T47D cell line lysates (35ug/lane). RHG19 (arrow) was detected using the purified Pab.



RHG19 Antibody (Center) (Cat. #AP9811c) flow cytometric analysis of T47D cells (right histogram) compared to a negative control cell (left histogram). FITC-conjugated goat-anti-rabbit secondary antibodies were used for the analysis.

Please note: All products are 'FOR RESEARCH USE ONLY. NOT FOR USE IN DIAGNOSTIC OR THERAPEUTIC PROCEDURES'.