

NARFL Antibody (Center)

Affinity Purified Rabbit Polyclonal Antibody (Pab)

Catalog # AP9824c

Product Information

Application	WB, FC, E
Primary Accession	Q9H6Q4
Reactivity	Human
Host	Rabbit
Clonality	Polyclonal
Isotype	Rabbit IgG
Clone Names	RB22210
Calculated MW	53020
Antigen Region	240-269

Additional Information

Gene ID	64428
Other Names	Cytosolic Fe-S cluster assembly factor NARFL, Iron-only hydrogenase-like protein 1, IOP1, Nuclear prelamins A recognition factor-like protein, Protein related to Narf, NARFL, PRN
Target/Specificity	This NARFL antibody is generated from rabbits immunized with a KLH conjugated synthetic peptide between 240-269 amino acids from the Central region of human NARFL.
Dilution	WB~~1:1000 FC~~1:10~50 E~~Use at an assay dependent concentration.
Format	Purified polyclonal antibody supplied in PBS with 0.09% (W/V) sodium azide. This antibody is purified through a protein A column, followed by peptide affinity purification.
Storage	Maintain refrigerated at 2-8°C for up to 2 weeks. For long term storage store at -20°C in small aliquots to prevent freeze-thaw cycles.
Precautions	NARFL Antibody (Center) is for research use only and not for use in diagnostic or therapeutic procedures.

Protein Information

Name	CIAO3 (HGNC:14179)
Function	Component of the cytosolic iron-sulfur protein assembly (CIA) complex, a multiprotein complex that mediates the incorporation of iron-sulfur cluster into extramitochondrial Fe/S proteins. Seems to negatively regulate the level

of HIF1A expression, although this effect could be indirect.

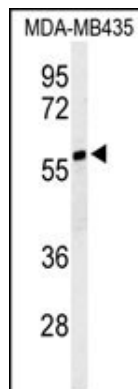
Tissue Location

Widely expressed..

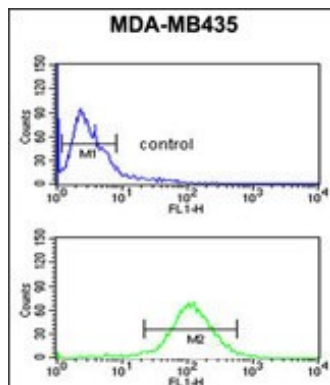
References

Song, D., et al. J. Biol. Chem. 284(51):35297-35307(2009)
Huang, J., et al. Biochem. J. 401(1):341-352(2007)
Rush, J., et al. Nat. Biotechnol. 23(1):94-101(2005)
Daniels, R.J., et al. Hum. Mol. Genet. 10(4):339-352(2001)

Images



Western blot analysis of NARFL Antibody (Center) (Cat. #AP9824c) in MDA-MB435 cell line lysates (35ug/lane). NARFL (arrow) was detected using the purified Pab.



NARFL Antibody (Center) (Cat. #AP9824c) flow cytometric analysis of MDA-MB435 cells (bottom histogram) compared to a negative control cell (top histogram). FITC-conjugated goat-anti-rabbit secondary antibodies were used for the analysis.

Please note: All products are 'FOR RESEARCH USE ONLY. NOT FOR USE IN DIAGNOSTIC OR THERAPEUTIC PROCEDURES'.