

ETS2 Antibody (Center)

Affinity Purified Rabbit Polyclonal Antibody (Pab)

Catalog # AP9846C

Product Information

Application	IHC-P, FC, WB, E
Primary Accession	P15036
Other Accession	P15037 , A1A4L6
Reactivity	Human
Predicted	Mouse, Bovine
Host	Rabbit
Clonality	Polyclonal
Isotype	Rabbit IgG
Clone Names	RB24588
Calculated MW	53001
Antigen Region	146-173

Additional Information

Gene ID	2114
Other Names	Protein C-ets-2, ETS2
Target/Specificity	This ETS2 antibody is generated from rabbits immunized with a KLH conjugated synthetic peptide between 146-173 amino acids from the Central region of human ETS2.
Dilution	IHC-P~~1:100~500 FC~~1:10~50 WB~~1:1000 E~~Use at an assay dependent concentration.
Format	Purified polyclonal antibody supplied in PBS with 0.09% (W/V) sodium azide. This antibody is purified through a protein A column, followed by peptide affinity purification.
Storage	Maintain refrigerated at 2-8°C for up to 2 weeks. For long term storage store at -20°C in small aliquots to prevent freeze-thaw cycles.
Precautions	ETS2 Antibody (Center) is for research use only and not for use in diagnostic or therapeutic procedures.

Protein Information

Name	ETS2
Function	Transcription factor activating transcription. Binds specifically the DNA GGAA/T core motif (Ets-binding site or EBS) in gene promoters and stimulates

transcription.

Cellular Location

Nucleus.

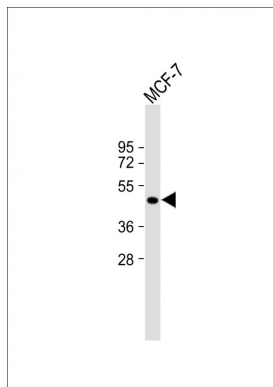
Background

ETS transcription factors, such as ETS2, regulate numerous genes and are involved in stem cell development, cell senescence and death, and tumorigenesis. The conserved ETS domain within these proteins is a winged helix-turn-helix DNA-binding domain that recognizes the core consensus DNA sequence GGAA/T of target genes.

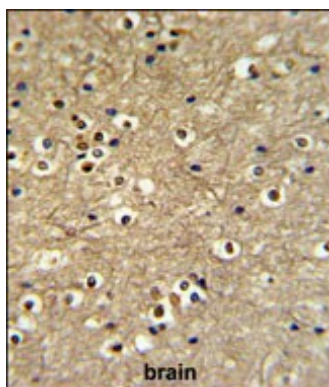
References

Zabuawala, T., et al. Cancer Res. 70(4):1323-1333(2010)
Yerges, L.M., et al. J. Bone Miner. Res. 24(12):2039-2049(2009)
Shalaby, A.A., et al. Mod. Pathol. 22(8):996-1005(2009)
Sutter, W., et al. J Craniomaxillofac Surg 37(5):263-271(2009)
Staun-Ram, E., et al. Reprod. Biol. Endocrinol. 7, 135 (2009)

Images

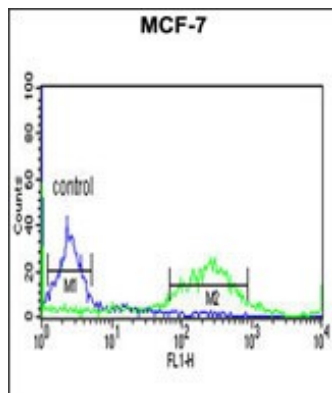


Anti-ETS2 Antibody (Center) at 1:2000 dilution + MCF-7 whole cell lysate Lysates/proteins at 20 µg per lane. Secondary Goat Anti-Rabbit IgG, (H+L), Peroxidase conjugated at 1/10000 dilution. Predicted band size : 53 kDa Blocking/Dilution buffer: 5% NFDM/TBST.



ETS2 Antibody (Center) (Cat. #AP9846c) IHC analysis in formalin fixed and paraffin embedded brain tissue followed by peroxidase conjugation of the secondary antibody and DAB staining. This data demonstrates the use of the ETS2 Antibody (Center) for immunohistochemistry. Clinical relevance has not been evaluated.

ETS2 Antibody (Center) (Cat. #AP9846c) flow cytometric analysis of MCF-7 cells (right histogram) compared to a negative control cell (left histogram). FITC-conjugated goat-anti-rabbit secondary antibodies were used for the analysis.



Citations

- [ETS2 mediated tumor suppressive function and MET oncogene inhibition in human non-small cell lung cancer.](#)

Please note: All products are 'FOR RESEARCH USE ONLY. NOT FOR USE IN DIAGNOSTIC OR THERAPEUTIC PROCEDURES'.