

RT25 Antibody (C-term)

Affinity Purified Rabbit Polyclonal Antibody (Pab)

Catalog # AP9851b

Product Information

Application	WB, IHC-P, FC, E
Primary Accession	P82663
Reactivity	Human
Host	Rabbit
Clonality	Polyclonal
Isotype	Rabbit IgG
Clone Names	RB24754
Calculated MW	20116
Antigen Region	145-173

Additional Information

Gene ID	64432
Other Names	28S ribosomal protein S25, mitochondrial, MRP-S25, S25mt, MRPS25, RPMS25
Target/Specificity	This RT25 antibody is generated from rabbits immunized with a KLH conjugated synthetic peptide between 145-173 amino acids from the C-terminal region of human RT25.
Dilution	WB~~1:1000 IHC-P~~1:100~500 FC~~1:10~50 E~~Use at an assay dependent concentration.
Format	Purified polyclonal antibody supplied in PBS with 0.09% (W/V) sodium azide. This antibody is purified through a protein A column, followed by peptide affinity purification.
Storage	Maintain refrigerated at 2-8°C for up to 2 weeks. For long term storage store at -20°C in small aliquots to prevent freeze-thaw cycles.
Precautions	RT25 Antibody (C-term) is for research use only and not for use in diagnostic or therapeutic procedures.

Protein Information

Name	MRPS25
Synonyms	RPMS25
Cellular Location	Mitochondrion.

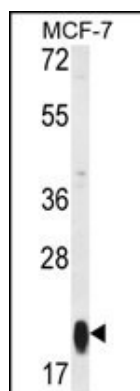
Background

Mammalian mitochondrial ribosomal proteins are encoded by nuclear genes and help in protein synthesis within the mitochondrion. Mitochondrial ribosomes (mitoribosomes) consist of a small 28S subunit and a large 39S subunit. They have an estimated 75% protein to rRNA composition compared to prokaryotic ribosomes, where this ratio is reversed. Another difference between mammalian mitoribosomes and prokaryotic ribosomes is that the latter contain a 5S rRNA. Among different species, the proteins comprising the mitoribosome differ greatly in sequence, and sometimes in biochemical properties, which prevents easy recognition by sequence homology. This gene encodes a 28S subunit protein. A pseudogene corresponding to this gene is found on chromosome 4.

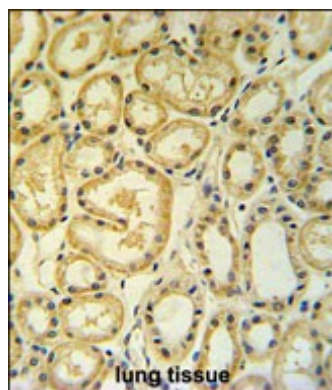
References

Ewing, R.M., et al. Mol. Syst. Biol. 3, 89 (2007) :
Zhang, Z., et al. Genomics 81(5):468-480(2003)
Kenmochi, N., et al. Genomics 77 (1-2), 65-70 (2001) :
Cavdar Koc, E., et al. J. Biol. Chem. 276(22):19363-19374(2001)
Hattori, A., et al. DNA Res. 7(6):357-366(2000)

Images

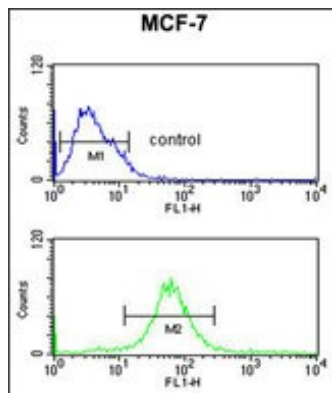


Western blot analysis of RT25 Antibody (C-term) (Cat. #AP9851b) in MCF-7 cell line lysates (35ug/lane). RT25 (arrow) was detected using the purified Pab.



RT25 Antibody (C-term) (Cat. #AP9851b) IHC analysis in formalin fixed and paraffin embedded human lung tissue followed by peroxidase conjugation of the secondary antibody and DAB staining. This data demonstrates the use of the RT25 Antibody (C-term) for immunohistochemistry. Clinical relevance has not been evaluated.

RT25 Antibody (C-term) (Cat. #AP9851b) flow cytometric analysis of MCF-7 cells (bottom histogram) compared to a negative control cell (top histogram). FITC-conjugated goat-anti-rabbit secondary antibodies were used for the analysis.



Please note: All products are 'FOR RESEARCH USE ONLY. NOT FOR USE IN DIAGNOSTIC OR THERAPEUTIC PROCEDURES'.