

# LXN Antibody

Affinity Purified Rabbit Polyclonal Antibody (Pab)

Catalog # AP9861a

## Product Information

---

<b>Application</b>	IHC-P, FC, WB, E
<b>Primary Accession</b>	<a href="#">Q9BS40</a>
<b>Reactivity</b>	Human
<b>Host</b>	Rabbit
<b>Clonality</b>	Polyclonal
<b>Isotype</b>	Rabbit IgG
<b>Clone Names</b>	RB22193
<b>Calculated MW</b>	25750

## Additional Information

---

<b>Gene ID</b>	56925
<b>Other Names</b>	Latexin, Endogenous carboxypeptidase inhibitor, ECI, Protein MUM, Tissue carboxypeptidase inhibitor, TCI, LXN
<b>Target/Specificity</b>	This LXN antibody is generated from rabbits immunized with human LXN recombinant protein.
<b>Dilution</b>	IHC-P~~1:100~500 FC~~1:10~50 WB~~1:1000 E~~Use at an assay dependent concentration.
<b>Format</b>	Purified polyclonal antibody supplied in PBS with 0.09% (W/V) sodium azide. This antibody is purified through a protein A column, followed by peptide affinity purification.
<b>Storage</b>	Maintain refrigerated at 2-8°C for up to 2 weeks. For long term storage store at -20°C in small aliquots to prevent freeze-thaw cycles.
<b>Precautions</b>	LXN Antibody is for research use only and not for use in diagnostic or therapeutic procedures.

## Protein Information

---

<b>Name</b>	LXN
<b>Function</b>	Hardly reversible, non-competitive, and potent inhibitor of CPA1, CPA2 and CPA4. May play a role in inflammation.
<b>Cellular Location</b>	Cytoplasm.

## Tissue Location

Highly expressed in heart, prostate, ovary, kidney, pancreas, and colon, moderate or low in other tissues including brain

## Background

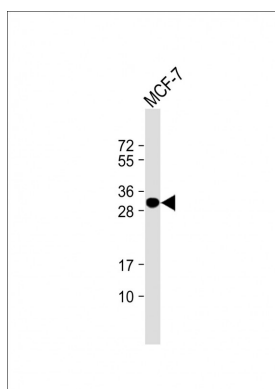
LXN encodes the only known protein inhibitor of zinc-dependent metallopeptidases.

## References

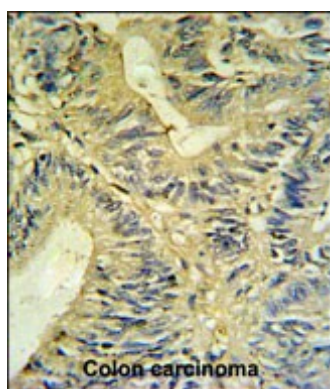
Pallares, I., et al. Proc. Natl. Acad. Sci. U.S.A. 102(11):3978-3983(2005)

Liu, Q., et al. Mol. Biol. Rep. 27(4):241-246(2000)

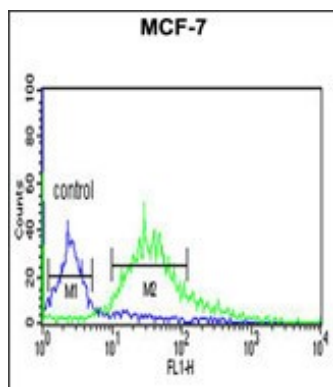
## Images



Anti-LXN Antibody at 1:1000 dilution + MCF-7 whole cell lysate Lysates/proteins at 20 µg per lane. Secondary Goat Anti-Rabbit IgG, (H+L), Peroxidase conjugated at 1/10000 dilution. Predicted band size : 26 kDa Blocking/Dilution buffer: 5% NFDm/TBST.



LXN Antibody (Cat. #AP9861a) IHC analysis in formalin fixed and paraffin embedded colon carcinoma followed by peroxidase conjugation of the secondary antibody and DAB staining. This data demonstrates the use of the LXN Antibody for immunohistochemistry. Clinical relevance has not been evaluated.



LXN Antibody (Cat. #AP9861a) flow cytometric analysis of MCF-7 cells (right histogram) compared to a negative control cell (left histogram). FITC-conjugated goat-anti-rabbit secondary antibodies were used for the analysis.

Please note: All products are 'FOR RESEARCH USE ONLY. NOT FOR USE IN DIAGNOSTIC OR THERAPEUTIC PROCEDURES'.